



Rockford Sanitary Systems, Inc.

ROCKFORD, IL 61125-0963

(815) 229-5077 - (800) 747-5077 - FAX (815) 229-5108

WEB SITE-www.rkfdseparators.com E MAIL-rssem@rkfdseparators.com

MODEL NO.

RCB-60

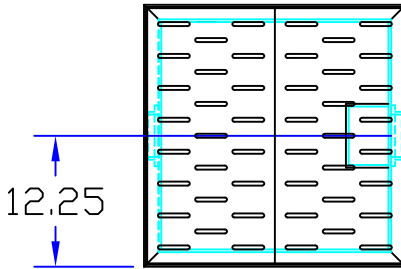
CATCH BASIN/SAND INTERCEPTOR

DRAWN BY

W.R.W.

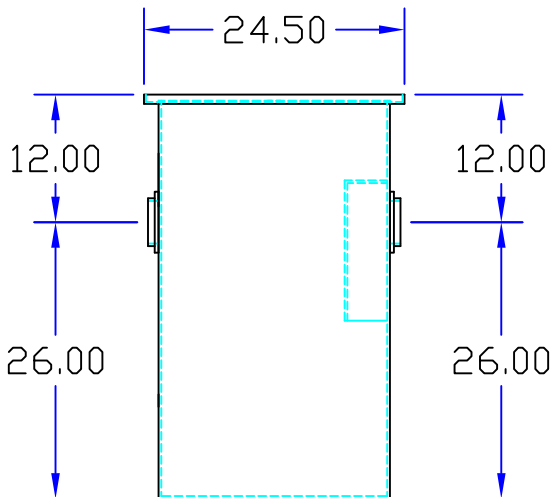
QUOTE #

JOB NAME



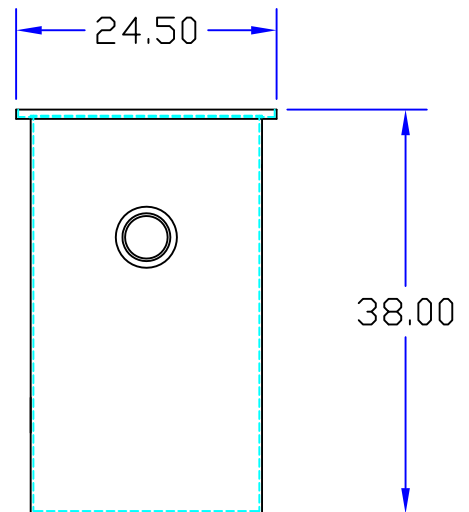
OPTIONAL FEATURES (ADDITIONAL COST)

- ☐ ANCHOR FLANGE
- ☐ EPOXY COATING
- ☐ LIGHT TRAFFIC REINFORCED COVERS
- ☐ HEAVY TRAFFIC REINFORCED COVERS
- ☐ STAINLESS STEEL CONSTRUCTION
- ☐ INTEGRAL EXTENSION _____ INCHES
- ☐ INLET & OUTLET SIZE _____ INCHES
- ☐ SOLID NON-SKID TREADPLATE COVER



INLET

OUTLET



Specifications

Rockford Model RCB-60 Catch basin/sand interceptor all welded A36 1/4" steel, 60 gallon static capacity, 4.00" threaded inlet/outlet with outlet trap seal (2) 3/8" slotted grates (for flush-with-floor installation) for pedestrian traffic, DPEX SHOP COAT coating inside & bituminous coating outside.

Optional features (Additional cost) listed above

Approved By

Company

Date