



Rockford Sanitary Systems, Inc.

ROCKFORD, IL 61125-0963

(815) 229-5077 - (800) 747-5077 - FAX (815) 229-5108

WEB SITE-www.rkfdseparators.com E MAIL-rssem@rkfdseparators.com

MODEL NO. RGI-150

GREASE INTERCEPTOR

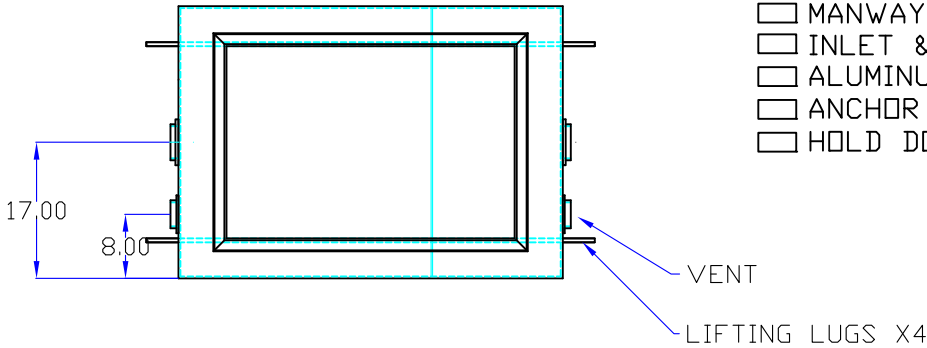
DRAWN BY QUOTE #
W.R.W.

JOB NAME

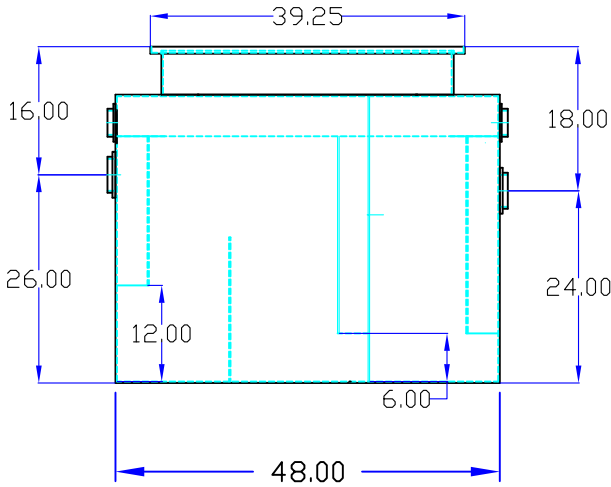
Note; Standard unit shown with 6" riser.
Manway height can be made to customers
specified requirements.

OPTIONAL FEATURES (ADDITIONAL COST)

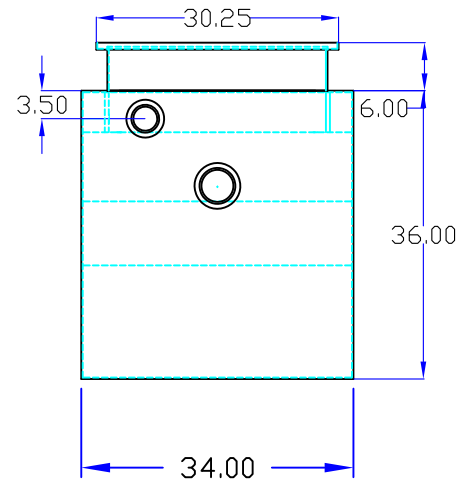
- EPOXY COATING
- STAINLESS STEEL CONSTRUCTION
- MANWAY HEIGHT REQUIRED _____
- INLET & OUTLET SIZE _____ INCHES
- ALUMINUM COVER
- ANCHOR FLANGE
- HOLD DOWN PADS



inlet



outlet



Specifications

Rockford Model RGI-150 all welded steel gravity grease interceptor, with 150 gallon capacity, 800 LBS greasy sludge capacity, 4" threaded inlet/outlet and 3" vent connections, removable 3/8" nonskid treadplate cover for flush with grade installation suitable for heavy traffic load (H/20), secured with stainless steel flat head screws, heavy duty leak-proof gasket, with bituminous coating outside. Supplied with lifting lugs X4. Approx. ship weight of 750 Lbs.

Optional features (Additional cost) listed above

Approved By

Company

Date