



Rockford Sanitary Systems, Inc.

ROCKFORD, IL 61125-0963

(815) 229-5077 - (800) 747-5077 - FAX (815) 229-5108

WEB SITE-www.rkfdseparators.com E MAIL-rssem@rkfdseparators.com

MODEL NO. RP-50-L0

GREASE INTERCEPTOR

DRAWN BY

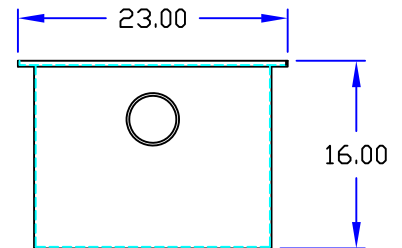
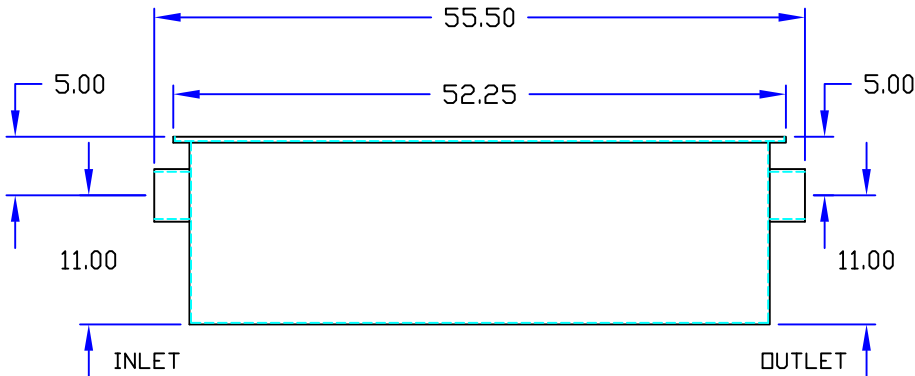
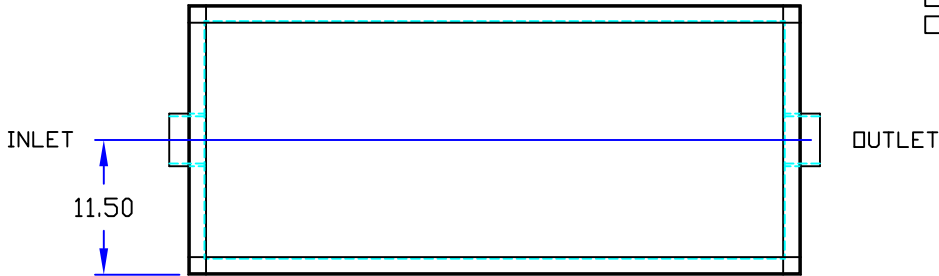
W.R.W.

QUOTE #

JOB NAME

OPTIONAL FEATURES (ADDITIONAL COST)

- ☐ ANCHOR FLANGE
- ☐ EPOXY COATING
- ☐ STAINLESS STEEL CONSTRUCTION
- ☐ INTEGRAL EXTENSION _____ INCHES
- ☐ INLET & OUTLET SIZE _____ INCHES
- ☐ ALUMINUM COVER
- ☐ THREADED CONNECTIONS



Specifications

Rockford Model RP-50-L0 all welded steel interceptor, for on the floor or flush with the floor installation, 50 g.p.m. intermittent flow, 100 lbs. grease capacity, 4.00" no-hub inlet and outlet connections and flow control device, removable 3/16" nonskid diamond treadplate cover for on the floor or flush with floor installation suitable for pedestrian traffic, secured with stainless steel flat head screws, heavy duty leak-proof gasket, enamel coating inside and outside

Optional features (Additional cost) listed above



Approved By

Company

Date