



# ROCKFORD SEPARATORS

5159 28th Ave ROCKFORD, IL 61109

(815) 229-5077 - FAX (815) 229-5108

www.rkfdseparators.com - rssem@rkfdseparators.com

MODEL NO. GF-1412-R

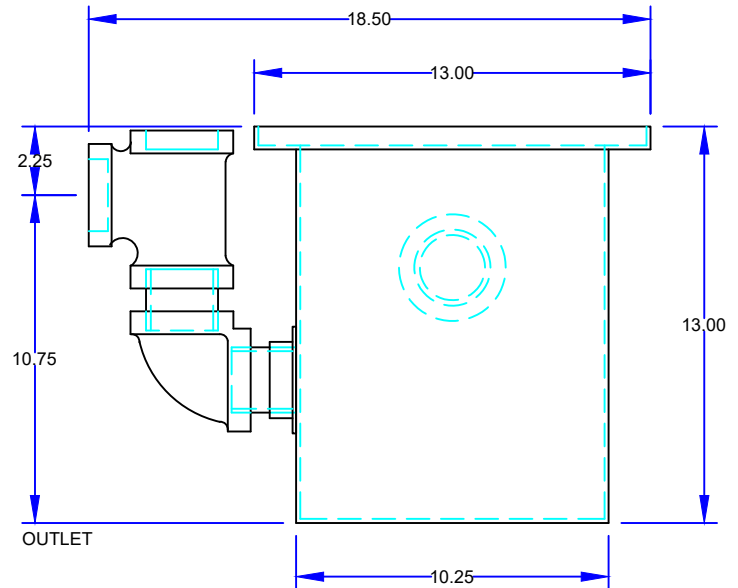
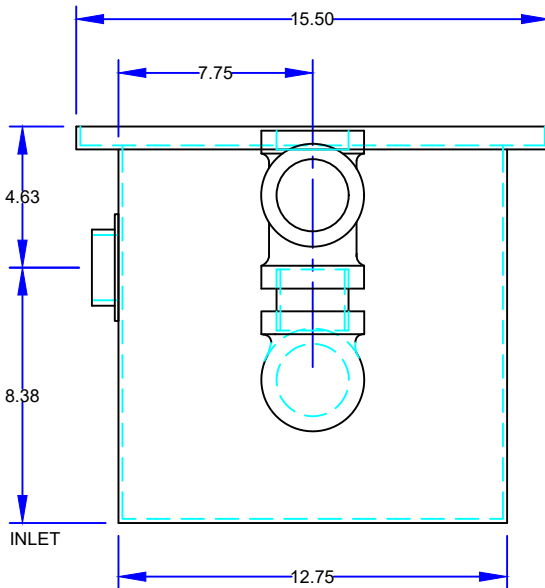
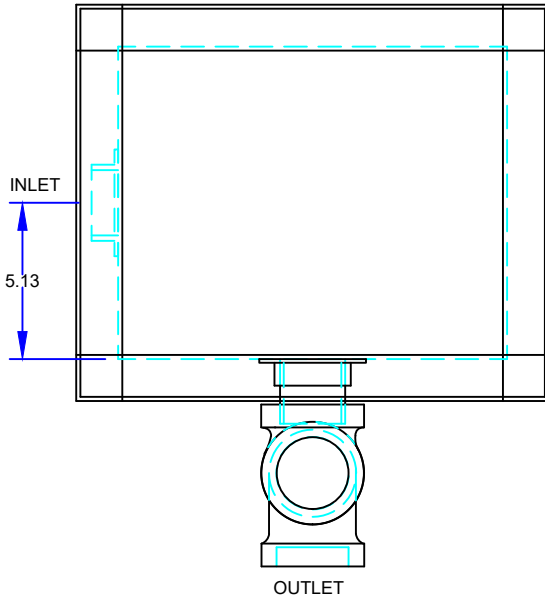
GREASE SEPARATOR

DRAWN BY R.P.P.

QUOTE#:

DATE: 03/29/22

JOB NAME:



## OPTIONAL FEATURES (ADDITIONAL COST)

- ☐ ANCHOR FLANGE
- ☐ CLAMP RING
- ☐ RECESSED LIFT HANDLES IN COVERS
- ☐ EPOXY COATING
- ☐ ANODES
- ☐ REINFORCED COVER
- ☐ STAINLESS STEEL CONSTRUCTION
- ☐ SEDIMENT BASKET
- ☐ FILTER MEDIA
- ☐ INTEGRAL EXTENSION \_\_\_\_\_ INCHES
- ☐ ALTERNATE VENT TAPPING SIZE \_\_\_\_\_ INCHES
- ☐ ALTERNATE INLET & OUTLET SIZE \_\_\_\_\_ INCHES
- ☐ CAST IRON OUTLET FITTINGS
- ☐ PVC OUTLET FITTINGS

## SPECIFICATIONS

Rockford Model GF-1412-R all welded 10 Ga. steel separator, 5.3 gallon static capacity, 12 g.p.m. intermittent flow, 2.00" tapped inlet and outlet connection, 27 lbs. greasy sludge capacity, visible double-wall outside trap seal, easily removable filter screen and separator screen, removable 3/8" nonskid diamond tread-plate cover for flush in the floor installation suitable for pedestrian traffic secured with stainless flat head screws, heavy duty leak-proof gasket, OPEX Shop Coat coating inside and bituminous coating outside.

### Optional features (Additional cost) listed above

Approved By

Company

Date