



ROCKFORD SEPARATORS

5159 28th Ave ROCKFORD, IL 61109
(815) 229-5077 - FAX (815) 229-5108
www.rkfdseparators.com - rssem@rkfdseparators.com

MODEL NO. GF-36-LO-L

GREASE SEPARATOR

DRAWN BY R.P.P.

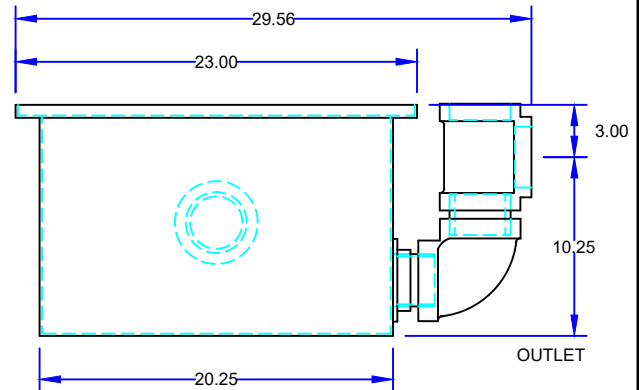
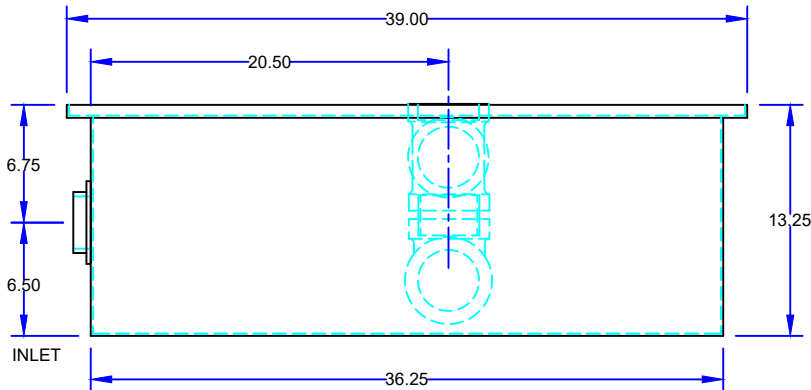
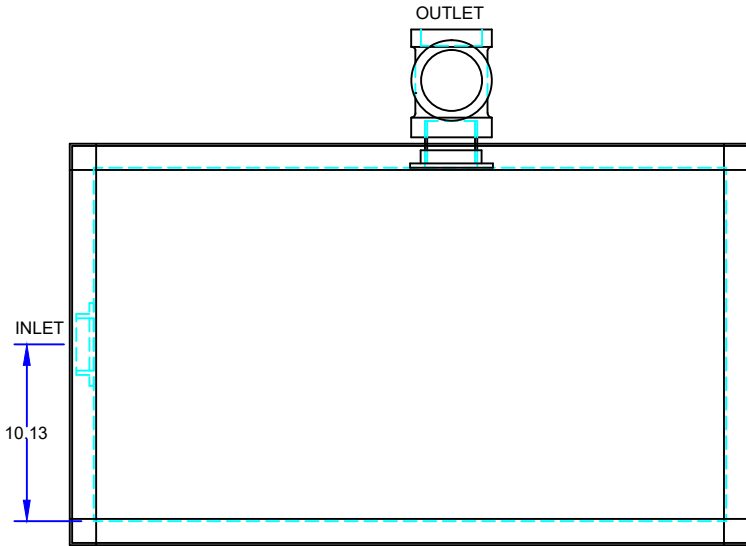
QUOTE#:

DATE: 03/29/22

JOB NAME:

OPTIONAL FEATURES (ADDITIONAL COST)

- ☐ ANCHOR FLANGE
- ☐ CLAMP RING
- ☐ RECESSED LIFT HANDLES IN COVERS
- ☐ EPOXY COATING
- ☐ ANODES
- ☐ REINFORCED COVER
- ☐ STAINLESS STEEL CONSTRUCTION
- ☐ SEDIMENT BASKET
- ☐ FILTER MEDIA
- ☐ INTEGRAL EXTENSION _____ INCHES
- ☐ ALTERNATE VENT TAPPING SIZE _____ INCHES
- ☐ ALTERNATE INLET & OUTLET SIZE _____ INCHES
- ☐ CAST IRON OUTLET FITTINGS
- ☐ PVC OUTLET FITTINGS



SPECIFICATIONS

Rockford Model GF-36-LO-L all welded 10 Ga. steel separator, 28 gallon static capacity, 35 g.p.m. intermittent flow, 3.00" tapped inlet and outlet connection, 141 lbs. greasy sludge capacity, visible double-wall outside trap seal, easily removable filter screen and separator screen, removable 3/8" nonskid diamond tread-plate cover for flush in the floor installation suitable for pedestrian traffic secured with stainless flat head screws, heavy duty leak-proof gasket, OPEX Shop Coat coating inside and bituminous coating outside.

Optional features (Additional cost) listed above

Approved By

Company

Date