



**Regular and thorough cleaning of your separator assures maximum operating efficiency. Here's what you need to know:**

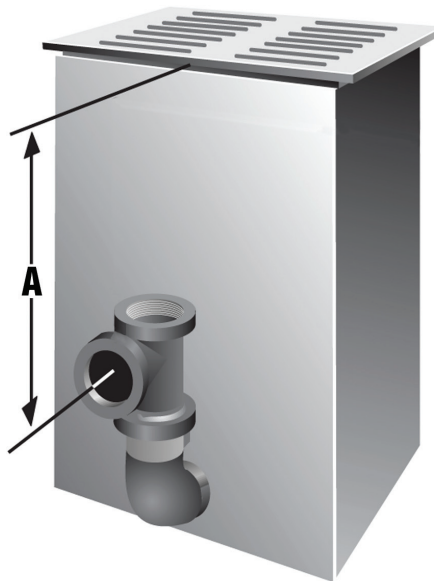
**Performance  
and Quality!**

### When to Clean Your Separator

It is time to clean your Rockford Separator when you notice a gradual slow down of the unit draining. With normal use, you should be able to establish a cleaning cycle. Whether once a week, or once a month. A thorough and regular cleaning each time will assure maximum operating efficiency, and will extend the life of your separator.

### How to Clean Your Separator

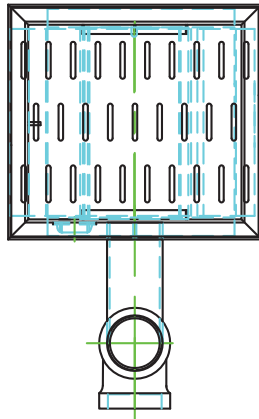
1. Remove all grates to gain full access to the internal parts of the separator.
2. Remove all parts, and clean. Pump out the entire unit, removing all oily waste and sediment that will accumulate on the bottom. **DO NOT DISPOSE OF INTO THE SEWER.**
3. Replace all parts. Call rockford if your separator parts are in need of replacement. All parts are usually in stock.
4. Run enough water to the separator, to restore the trap seal.



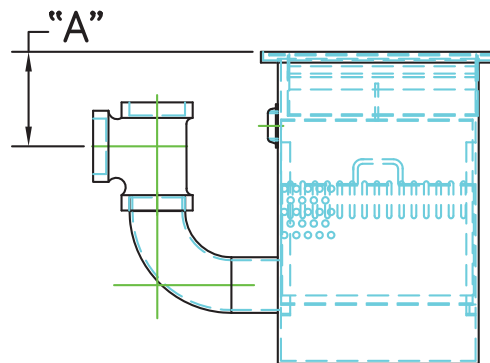
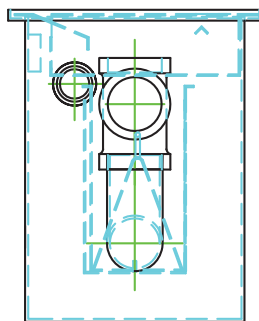


1. Remove the covers and remove any loose fittings (if any) that were shipped inside.
2. Always consider the location of the separator, for cleaning maintenance.
3. Excavation for flush with grade installation shall be free of any materials that may damage the separator and its coatings. The separator shall be set being level and plumb, on a compacted material of full support concrete slab. Taking care not to damage the coatings. Coat any exposed fittings with an asphalt based coating, and to any damaged areas due to handling.
4. The static water level must be below the frost line in your area. Call Rockford for any extensions that may be needed to achieve this.
5. The equipment used to set the separator must be of adequate size capable of lifting the entire unit. Do not drag or drop the separator into place or possible damage to the structure or its coatings may occur.
6. Connect the fittings per your local codes.
7. Fill the separator with clean water as soon as possible after installation.
8. Any separator installed in traffic areas, needs to be reinforced to withstand the anticipated loads.
9. Areas subject to high water tables, must consider anchoring the unit.

"A" = TOP OF UNIT  
TO CENTER OF OUTLET  
ON STANDARD UNITS



MODEL	"A"
SD-18	4 1/2"
SD-20	7 1/2"
SD-25	7 5/8"
SD-30	10"
SD-40	10"
SD-48	10"
SD-60	11"
SD-72	11"
SD-84	11"
SD-96	15"



Dimension **A** must be specified at time of order. If not, bolt on extensions are available to meet your requirements.