

Rockford Separators

5159 28th Ave ROCKFORD, IL 61109

(815) 229-5077 - (800) 747-5077 - FAX (815) 229-5108

WEB SITE-www.rkfdseparators.com E MAIL-rssem@rkfdseparators.com

MODEL NO. RGI-2000

GREASE INTERCEPTOR

DRAWN BY

QUOTE #

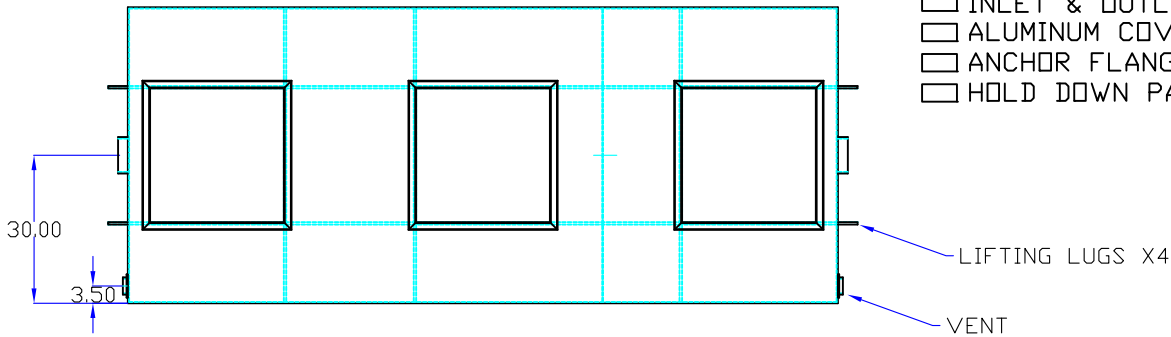
W.R.W.

JOB NAME

Note; Standard unit shown with 6" riser.
Manway height can be made to customers
specified requirements.

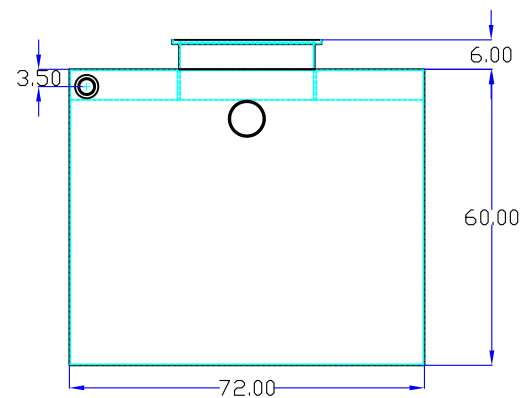
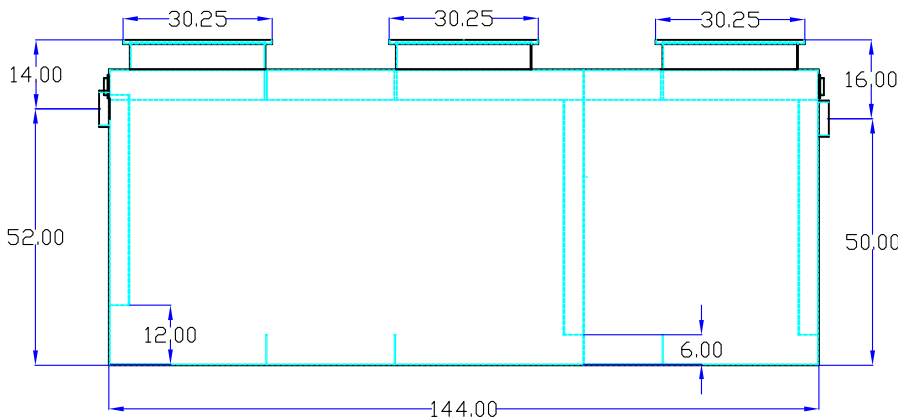
OPTIONAL FEATURES (ADDITIONAL COST)

- ☐ EPOXY COATING
- ☐ STAINLESS STEEL CONSTRUCTION
- ☐ MANWAY HEIGHT REQUIRED _____
- ☐ INLET & OUTLET SIZE _____ INCHES
- ☐ ALUMINUM COVER
- ☐ ANCHOR FLANGE
- ☐ HOLD DOWN PADS



inlet

outlet



Specifications

Rockford Model RGI-2000 all welded steel gravity grease interceptor, with 2000 gallon capacity, 10,080 LBS greasy sludge capacity, 6.00" threaded inlet/outlet and 3.00" vent connections, removable 3/8" nonskid tread plate covers for flush with grade installation suitable for heavy traffic loading (H/20), secured with stainless steel flat head screws, heavy duty leak-proof gasket, with bituminous coating outside. Approx. ship weight of 3100 Lbs.

Optional features (Additional cost) listed above

Approved By

Company

Date