

Rockford Separators

5159 28th Ave ROCKFORD, IL 61109

(815) 229-5077 - (800) 747-5077 - FAX (815) 229-5108

WEB SITE-www.rkfdseparators.com E MAIL-rssem@rkfdseparators.com

MODEL NO. ROI-150

OIL/SAND INTERCEPTOR

DRAWN BY

QUOTE #

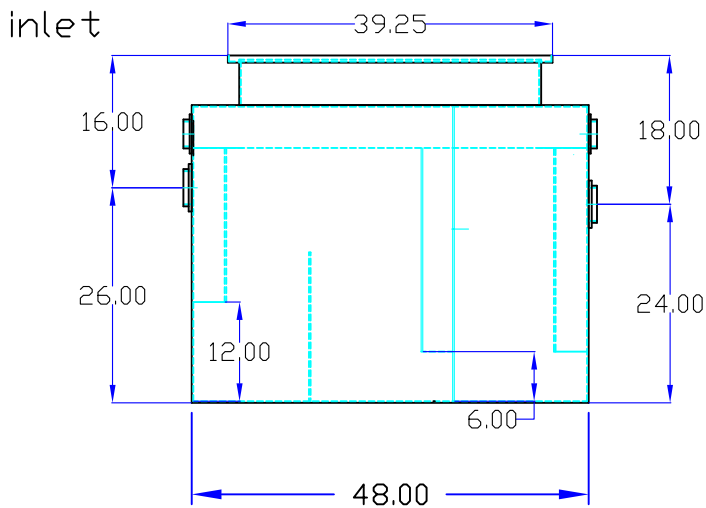
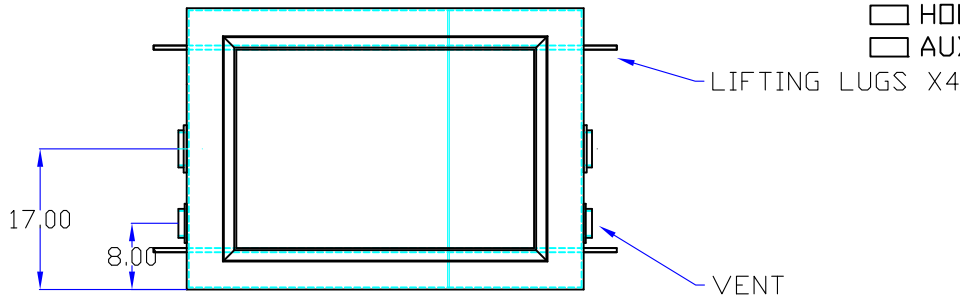
JOB NAME

W.R.W.

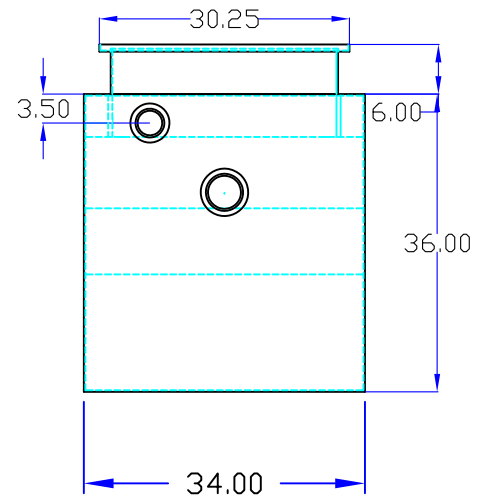
Note; Standard unit shown with 6" riser.
Manway height can be made to customers specified requirements.

OPTIONAL FEATURES (ADDITIONAL COST)

- EPOXY COATING
- STAINLESS STEEL CONSTRUCTION
- MANWAY HEIGHT REQUIRED _____
- INLET & OUTLET SIZE _____ INCHES
- ALUMINUM COVER
- ANCHOR FLANGE
- HOLD DOWN PADS
- AUXILIARY INLET



outlet



Specifications

Rockford Model ROI-150 all welded steel gravity oil/sediment interceptor, with 150 gallon capacity, 4" threaded inlet/outlet and 3" vent connections, removable 3/8" nonskid tread plate cover for flush with grade installation suitable for heavy traffic load (H/20), secured with stainless steel flat head screws, heavy duty leak-proof gasket, with bituminous coating outside. Supplied with lifting lugs X4. Approx. ship weight of 750 Lbs.

Unit is built to IAPMO/ANSI Z1001-2014 construction standard for fabricated gravity interceptors.

Optional features (Additional cost) listed above

Approved By

Company

Date