

# Rockford Separators

5159 28th Ave ROCKFORD, IL 61109

(815) 229-5077 - (800) 747-5077 - FAX (815) 229-5108

WEB SITE-www.rkfdseparators.com E MAIL-rssem@rkfdseparators.com

MODEL NO. ROI-500

OIL/SAND INTERCEPTOR

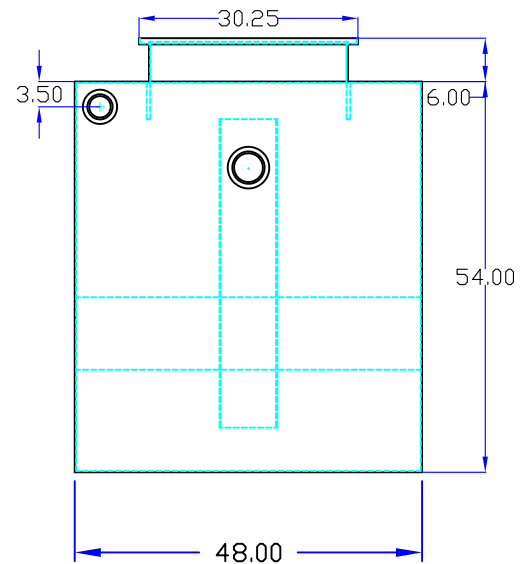
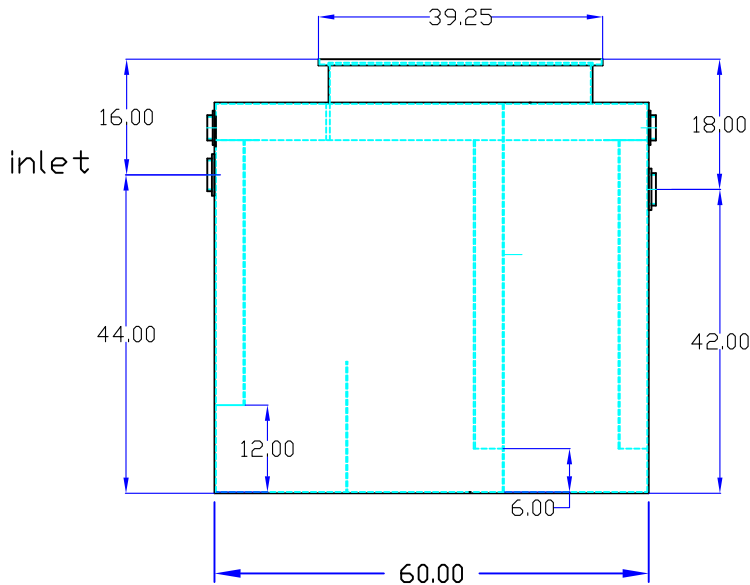
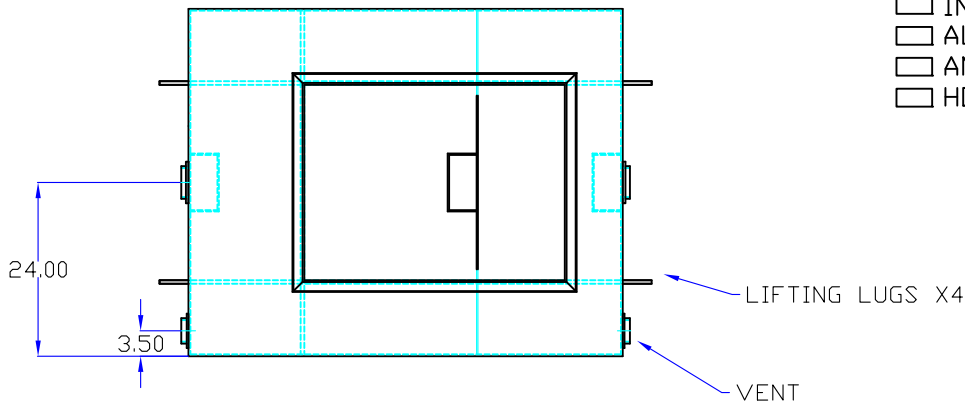
DRAWN BY QUOTE #  
W.R.W.

JOB NAME

Note; Standard unit shown with 6" riser.  
Manway height can be made to customers  
specified requirements.

### OPTIONAL FEATURES (ADDITIONAL COST)

- EPOXY COATING
- STAINLESS STEEL CONSTRUCTION
- MANWAY HEIGHT REQUIRED \_\_\_\_\_
- INLET & OUTLET SIZE \_\_\_\_\_ INCHES
- ALUMINUM COVER
- ANCHOR FLANGE
- HOLD DOWN PADS



## Specifications

Rockford Model ROI-500 all welded steel oil/sand interceptor, with 500 gallon capacity, 4" threaded inlet/outlet and 3" vent connections, removable 3/8" nonskid tread plate cover for flush with grade installation suitable for heavy traffic load (H/20), secured with stainless steel flat head screws, heavy duty leak-proof gasket, with bituminous coating outside. Supplied with lifting lugs X4. Approx. ship weight of 1450 Lbs.

Optional features (Additional cost) listed above

Approved By

Company

Date