



ROCKFORD SEPARATORS

5159 28th Ave ROCKFORD, IL 61109

(815) 229-5077 - FAX (815) 229-5108

www.rkfdseparators.com - rssem@rkfdseparators.com

MODEL NO. RP-350

GREASE INTERCEPTOR

DRAWN BY R.P.P.

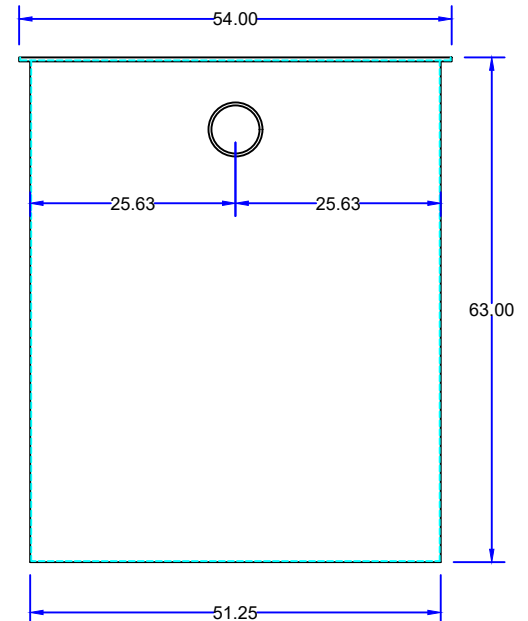
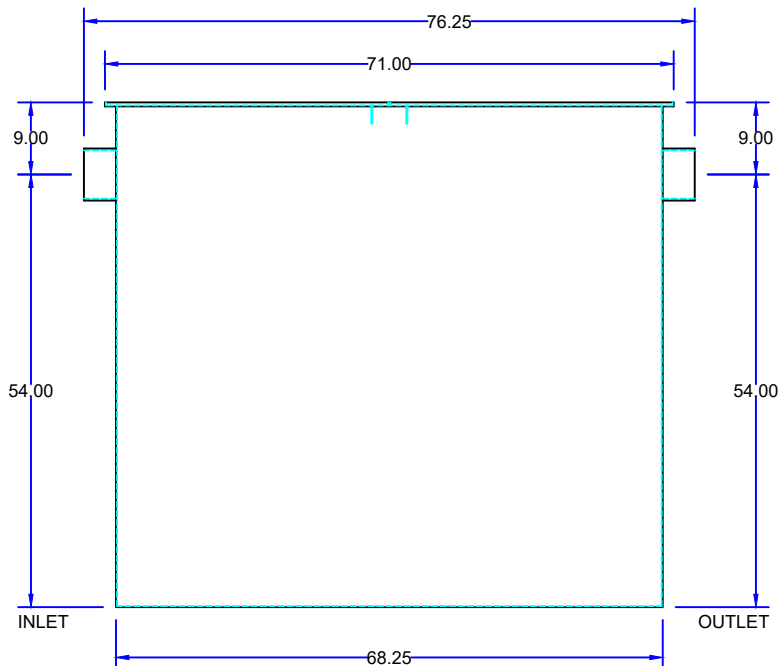
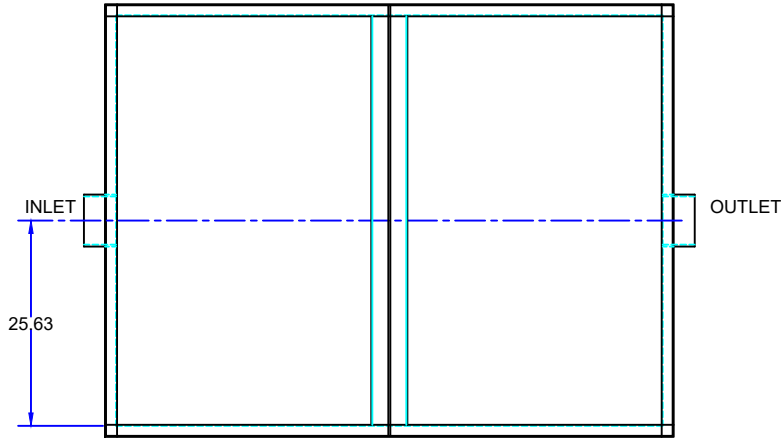
QUOTE#:

DATE: 03/08/24

JOB NAME:

OPTIONAL FEATURES (ADDITIONAL COST)

- ☐ ANCHOR FLANGE
- ☐ EPOXY COATING
- ☐ STAINLESS STEEL CONSTRUCTION
- ☐ INTEGRAL EXTENSION _____ INCHES
- ☐ INLET & OUTLET SIZE _____ INCHES
- ☐ ALUMINUM COVER
- ☐ THREADED CONNECTIONS



SPECIFICATIONS

Rockford Model RP-350 all welded steel interceptor, 780 gallon static holding capacity, 350 g.p.m. intermittent flow, 700 lbs. grease capacity, 6" no-hub inlet and outlet connections and flow control device, removable 3/16" nonskid diamond treadplate cover for on the floor or flush with floor installation suitable for pedestrian traffic, secured with stainless steel flat head screws, heavy duty leak-proof gasket, enamel coating inside and outside

Optional features (Additional cost) listed above

Approved By

Company

Date