



# ROCKFORD SEPARATORS

5159 28th Ave ROCKFORD, IL 61109  
(815) 229-5077 - FAX (815) 229-5108  
www.rkfdseparators.com - rssem@rkfdseparators.com

**MODEL NO. RP-4**

**GREASE INTERCEPTOR**

**DRAWN BY R.P.P.**

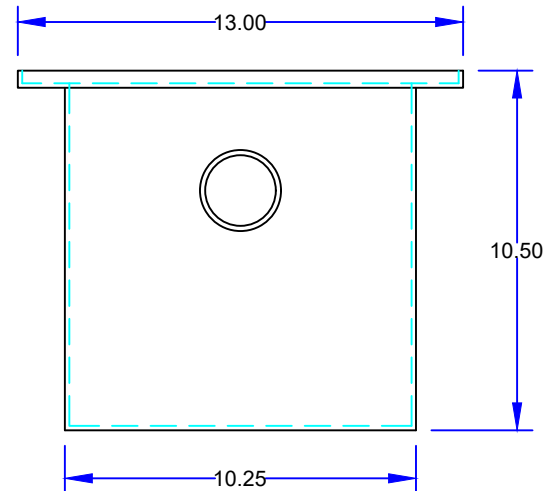
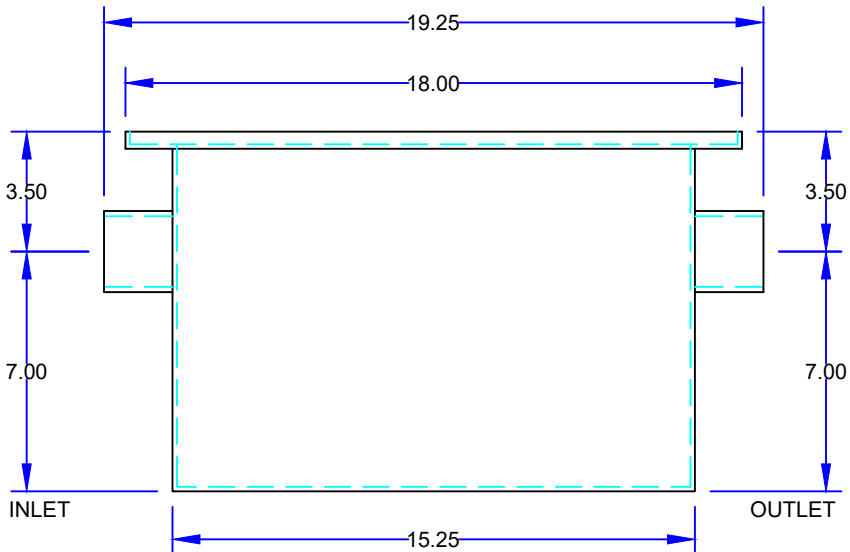
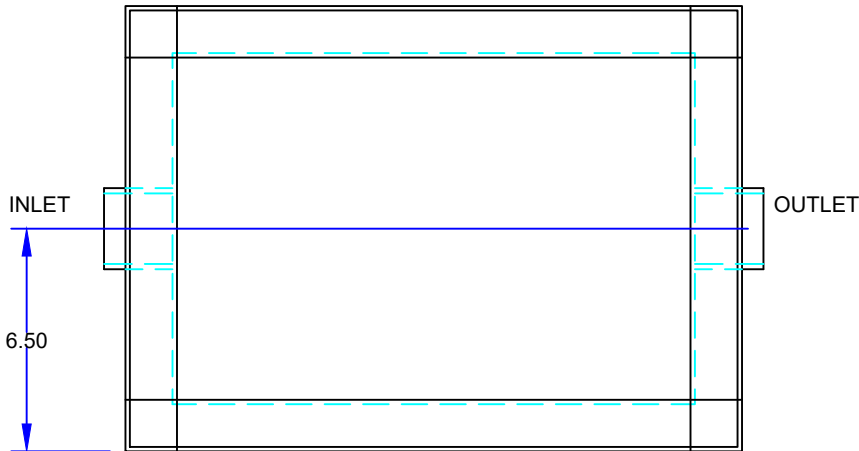
**QUOTE#:**

**DATE: 01/23/23**

**JOB NAME:**

OPTIONAL FEATURES (ADDITIONAL COST)

- ☐ ANCHOR FLANGE
- ☐ EPOXY COATING
- ☐ STAINLESS STEEL CONSTRUCTION
- ☐ INTEGRAL EXTENSION \_\_\_\_\_ INCHES
- ☐ INLET & OUTLET SIZE \_\_\_\_\_ INCHES
- ☐ ALUMINUM COVER
- ☐ THREADED CONNECTIONS



## SPECIFICATIONS

Rockford Model RP-04 all welded steel interceptor, for on the floor or flush with the floor installation, 04 g.p.m. intermittent flow, 8 lbs. grease capacity, 2.00" no-hub inlet and outlet connections and flow control device, removable 3/16" nonskid diamond tread plate cover for on the floor or flush with floor installation suitable for pedestrian traffic, secured with stainless steel flat head screws, heavy duty leak-proof gasket, enamel coating inside and outside.

**Optional features (Additional cost) listed above**

**Approved By**

**Company**

**Date**