



# ROCKFORD SEPARATORS

5159 28th Ave ROCKFORD, IL 61109

(815) 229-5077 - FAX (815) 229-5108

www.rkfdseparators.com - rssem@rkfdseparators.com

MODEL NO. RPS-10

SOLIDS INTERCEPTOR

DRAWN BY R.P.P.

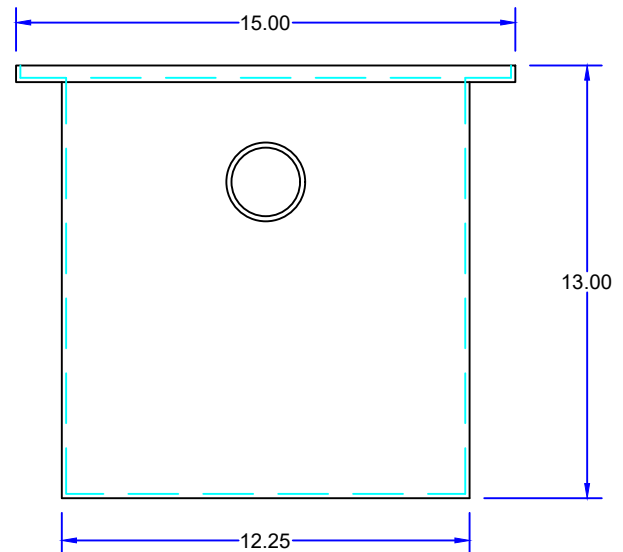
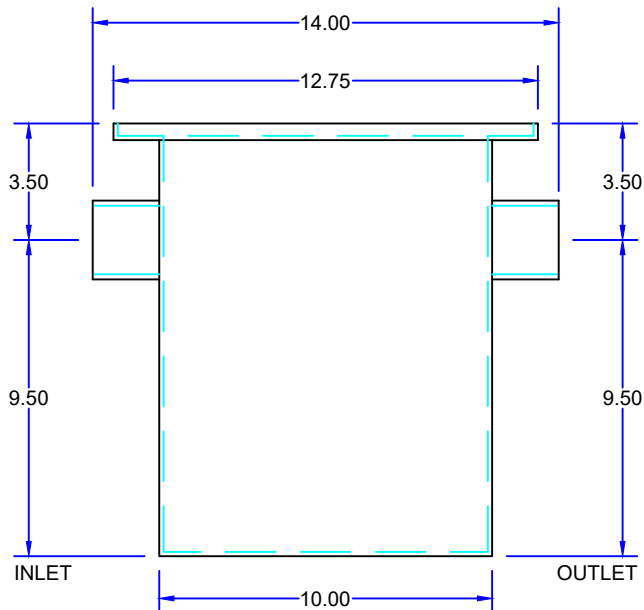
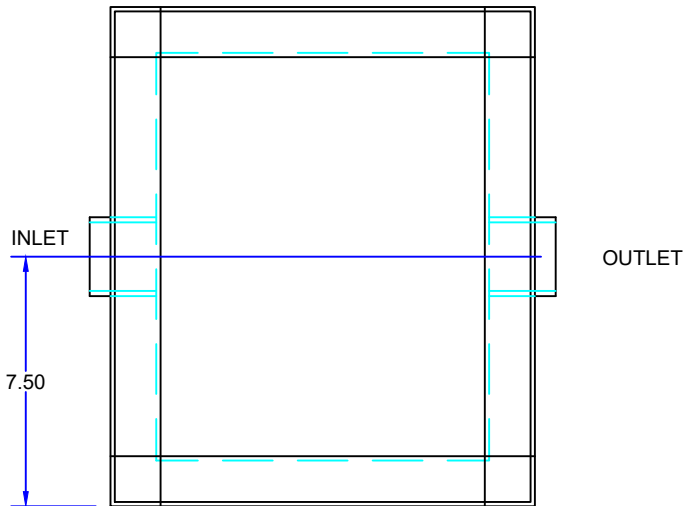
QUOTE#:

DATE: 01/11/24

JOB NAME:

## OPTIONAL FEATURES (ADDITIONAL COST)

- ☐ ANCHOR FLANGE
- ☐ EPOXY COATING
- ☐ STAINLESS STEEL CONSTRUCTION
- ☐ INTEGRAL EXTENSION \_\_\_\_\_ INCHES
- ☐ INLET & OUTLET SIZE \_\_\_\_\_ INCHES
- ☐ ALUMINUM COVER
- ☐ THREADED CONNECTIONS
- ☐ STAINLESS STEEL SEDIMENT BASKET



## SPECIFICATIONS

Rockford Model RPS-10 all welded steel solids interceptor, for on the floor or flush with the floor installation, 10 g.p.m. intermittent flow, 200" no hub inlet and outlet connections, removable 3/16" nonskid diamond tread plate cover for on the floor or flush with floor installation suitable for pedestrian traffic, secured with stainless steel flat head screws, heavy duty leak-proof gasket, enamel coating inside and outside.

Optional features (Additional cost) listed above

Approved By

Company

Date