



ROCKFORD SEPARATORS

5159 28th Ave ROCKFORD, IL 61109

(815) 229-5077 - FAX (815) 229-5108

www.rkfdseparators.com - rssem@rkfdseparators.com

MODEL NO. RPS-20

SOLIDS INTERCEPTOR

DRAWN BY R.P.P.

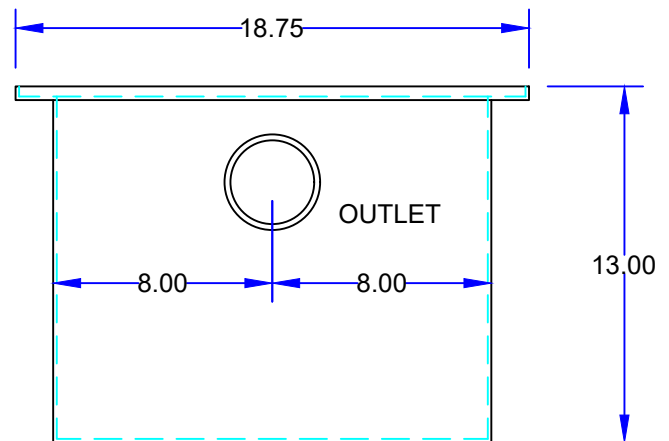
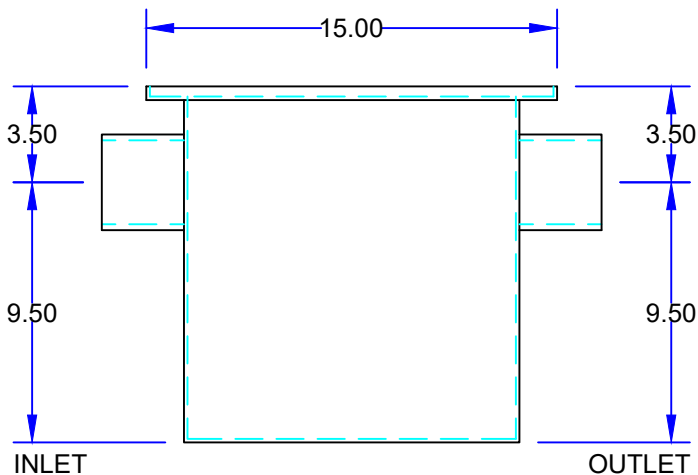
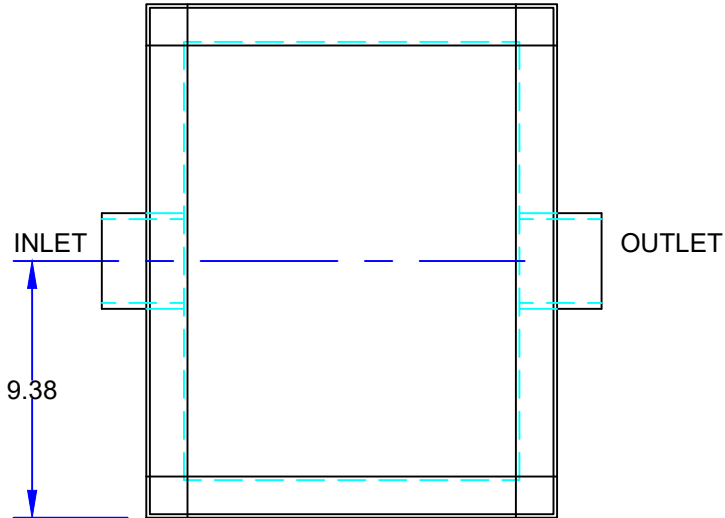
QUOTE#:

DATE: 09/01/22

JOB NAME:

OPTIONAL FEATURES (ADDITIONAL COST)

- ☐ ANCHOR FLANGE
- ☐ EPOXY COATING
- ☐ STAINLESS STEEL CONSTRUCTION
- ☐ INTEGRAL EXTENSION _____ INCHES
- ☐ INLET & OUTLET SIZE _____ INCHES
- ☐ ALUMINUM COVER
- ☐ THREADED CONNECTIONS



SPECIFICATIONS

Rockford Model RPS-20 all welded fabricated steel solids interceptor, for on the floor or flush with floor installation, 20 g.p.m. intermittent flow, Inlet and outlet are 3.00" no-hub connection removable 3/16" nonskid diamond tread-plate cover for on the floor or flush with floor installation suitable for pedestrian traffic, secured with stainless steel flat head screws, heavy duty leak-proof gasket, enamel coating inside and outside.

Optional features (Additional cost) listed above

Approved By

Company

Date