



# ROCKFORD SEPARATORS

5159 28th Ave ROCKFORD, IL 61109

(815) 229-5077 - FAX (815) 229-5108

www.rkfdseparators.com - rssem@rkfdseparators.com

MODEL NO. RPS-50

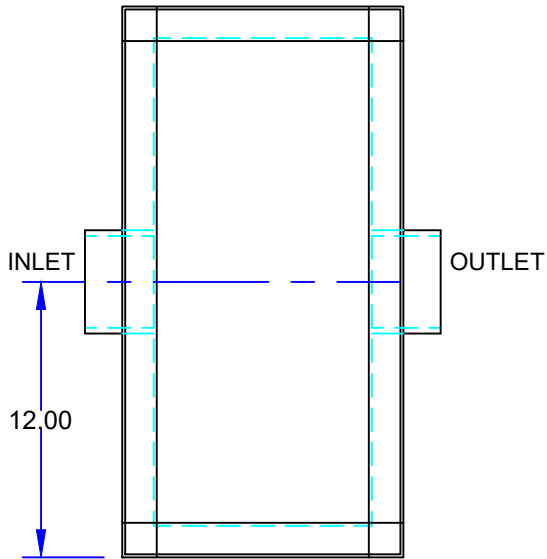
SOLIDS INTERCEPTOR

DRAWN BY R.P.P.

QUOTE#:

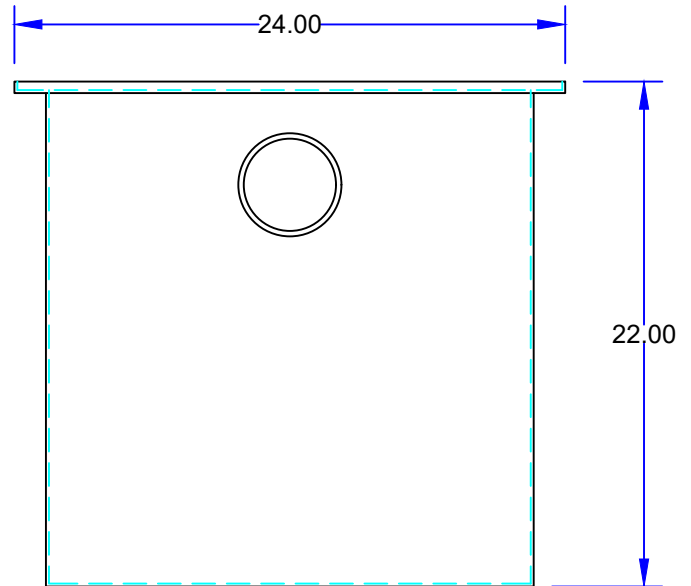
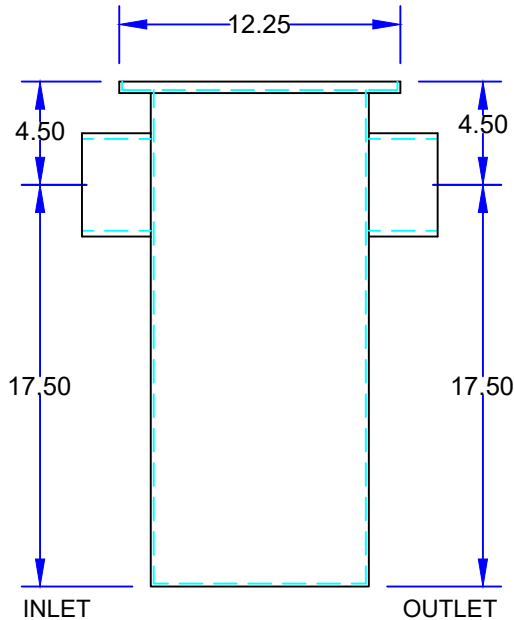
DATE: 02/29/24

JOB NAME:



#### OPTIONAL FEATURES (ADDITIONAL COST)

- ☐ ANCHOR FLANGE
- ☐ EPOXY COATING
- ☐ HEAVY TRAFFIC H2O RATED CONSTRUCTION
- ☐ STAINLESS STEEL CONSTRUCTION
- ☐ INTEGRAL EXTENSION \_\_\_\_\_ INCHES
- ☐ INLET & OUTLET SIZE \_\_\_\_\_ INCHES
- ☐ ALUMINUM COVER
- ☐ THREADED CONNECTIONS



## SPECIFICATIONS

Rockford Model RPS-50 all welded steel solids interceptor, for on the floor or flush with the floor installation, 50 g.p.m. intermittent flow, 4.00" no hub inlet and outlet connections, removable 3/16" nonskid diamond tread plate cover for on the floor or flush with floor installation suitable for pedestrian traffic, secured with stainless steel flat head screws, heavy duty leak-proof gasket.

Optional features (Additional cost) listed above

Approved By

Company

Date