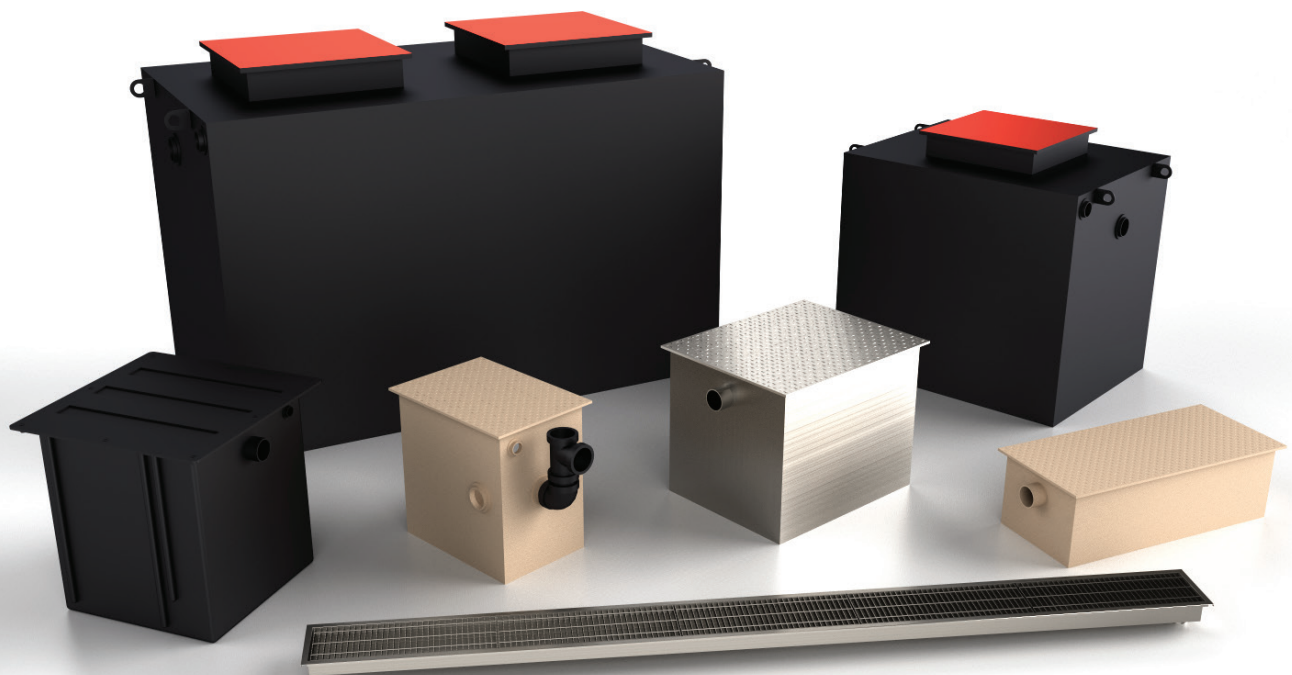




ROCKFORD SEPARATORS

The Trusted Source for Separators and Drainage Systems for 50 Years



Separate and retain contaminants at the source with Separators, Interceptors, Trench Drains and Catch Basins from Rockford Separators

Architects, engineers, building officials, health agencies, plumbing contractors, and other specifiers have come to rely on our products for their quality and precision. And they've come to rely on our company innovation, quick turnaround and responsive, expert service.

Applications:

RESTAURANTS
GROCERY STORES
INSTITUTIONAL KITCHENS
PRODUCTION FACILITIES
HOSPITALS
MAINTENANCE GARAGES

With separation as its sole business, Rockford Separators has supplied quality systems to the plumbing industry for over 50 years. More than 35 varieties in over 600 available sizes are engineered and custom-built in the USA for job-site specific applications and installed wherever separation systems are required.

The principle behind a Rockford Separator product follows nature's own law of gravity in separating

lighter-than-water waste matter from heavier-than-water waste, retaining both in the separator.

Clogged drain lines are virtually eliminated due to the unique, yet simple design incorporated into Rockford Separators: there is no straight in-and-out travel of waste water from the inlet to the outlet; instead, separator screens and a removable filter screen prevent grease, oil, and other wastes from entering the sewage system.





Rockford Separators products are used in separating and retaining numerous wastes, including:

- GREASE
- OIL
- FUEL
- FATS
- LINT
- HAIR
- FOOD SOLIDS
- SEDIMENT
- SOLID WASTE
- SAND
- GRAVEL
- SLUDGE
- PLASTER
- PRECIOUS METALS
- GLASS CHIPS AND GRINDINGS
- FIBROUS MATERIALS
- METAL CHIPS
- WAXES
- AND MORE...



You'll find quality Rockford Separators products in any installation where contaminants need to be contained at the source.

- INDUSTRIAL PLANTS
- OFFICE BUILDINGS
- MULTI-UNIT APARTMENTS
- RESTAURANTS
- FOOD-PROCESSING PLANTS
- LAUNDROMATS
- HEALTH CENTERS
- RETAIL SERVICE CENTERS



Grease Separators

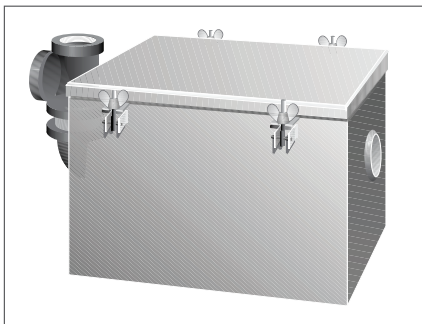
A grease separator/interceptor is designed and installed in the drain line to separate and retain destructive, hazardous and undesirable matter from waterborne waste, preventing their passage into the drainage system. Preventing grease from entering the sewer system (which results in clogging of laterals, mains and disposal difficulties at treatment plants) can be accomplished by the installation of Rockford Grease Separator at the source of the grease.

Uses:

RESTAURANTS
CAFETERIAS
HOSPITALS.
SOUP KETTLE DRAINAGE
MEAT, FISH OR FOWL
SLAUGHTERING FACILITIES
MEAT PACKING



G-Series Grease Separator



Perfect for on-the-floor or partially recessed installation

FEATURES AND SPECIFICATIONS:

- Visible double-wall outside trap seal
- Non-removable separator screen with easily removable filter screen
- Gasketed cover hand-tightened to body with safety-catch bolt assemblies
- Enamel coating inside and outside
- Available in stainless steel
- Intermittent Flow from 5 - 100 GPM
- Static Holding Capacities from 1.7 - 545 gallons
- Tapped inlet and outlet 1.5 - 4 inches

GF Series Grease Separator

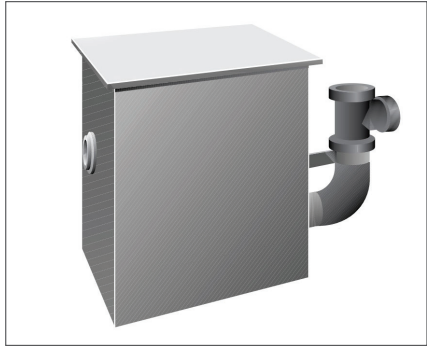


Ideal for flush-with-floor installations

FEATURES AND SPECIFICATIONS:

- All welded heavy gauge steel with corrosion resistant coating
- Visible double-wall outside trap seal
- Removable nonskid flush-with-floor cover of heavy steel plate with leakproof and airtight gaskets.
- OPEX® Shop Coat coating inside, bituminous coating outside.
- Intermittent Flows from 12 - 100 GPM
- Static Holding Capacities from 5.3 - 110 gallons
- Greasy sludge capacities from 27 - 554 lbs.

GIS Series Grease Separator

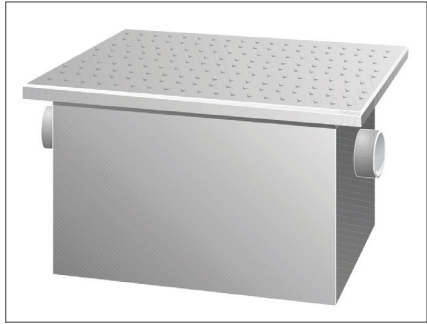


Specially designed for commercial and industrial applications.

FEATURES AND SPECIFICATIONS:

- All-welded 1/4" steel separators
- (hubbed) inlet and outlet with tapped outlet vent connection
- 6" AND larger – companion flange connection
- Available with 8" or 10" inlet and outlet
- Intermittent Flow 150 – 750 gpm
- Static Holding Capacities from 150 – 1,100 gallons
- Greasy sludge capacities from 756 – 5,544 lbs.

RP Series Grease Interceptor

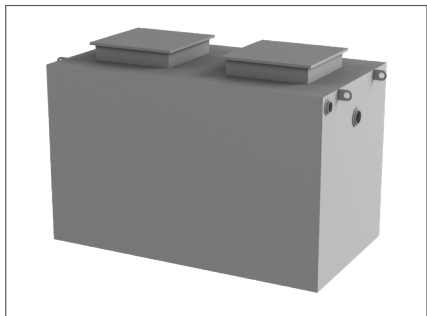


Designed for on-the-floor, partially recessed or flush-with-floor installations

FEATURES AND SPECIFICATIONS:

- All welded heavy gauge steel with corrosion-resistant coating
- No-hub inlet and outlet connections
- Removable nonskid flush-with-floor cover of heavy steel plate with leakproof and airtight gaskets.
- Intermittent Flows from 4 – 500 GPM
- Liquid Holding Capacities from 3.35 – 1,008 gallon
- Greasy sludge capacities from 18 – 5,009 lbs

RGI Series Grease Interceptor



Ideal for installations with heavy truck-traffic

FEATURES AND SPECIFICATIONS:

- All-welded steel construction
- Threaded inlet/outlet connections
- Removable, H-20 rated, 3/8" nonskid diamond-tread plate cover for flush with grade installations
- Bituminous coating outside
- Liquid Holding Capacities from 150 – 10,000 gallons
- Double wall construction available

R-POLY Series Grease Interceptor



Seamless Polyethylene Construction

FEATURES AND SPECIFICATIONS:

- Capable of withstanding 212 degrees F continuous service
- Polyethylene cover secured with stainless steel screws
- Cover gasketed by O-ring type gasket
- Intermittent Flows from 7 – 350 gpm
- Liquid Holding Capacities from 3.6 – 560 gallons
- Greasy sludge capacities from 14 – 2,822 lbs.

Oil Separators

Ideal for car and truck maintenance/repair facilities and car washes. Rockford Oil Separators/Interceptors are designed to receive, directly from plant equipment or floor drains, various kinds of oils, gasoline, kerosene, naphtha, benzene, other volatile liquid waste, and sludge. They retain this harmful waste matter and prevent its entry into the drainage system, providing triple advantages and are ideal for car and truck maintenance/repair facilities and car washes.

Applications:

PLANT EQUIPMENT
FLOOR DRAINS
OILS
GASOLINE
WASH BAYS
WASTE AND SLUDGE



OS Series Oil Separator

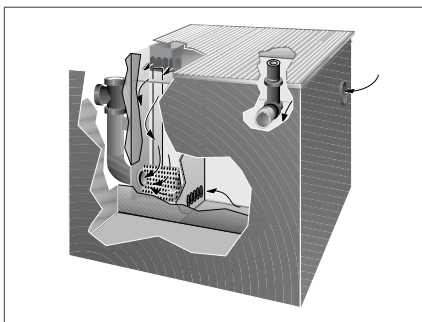


Designed for safe disposal of oil and other volatile liquids

FEATURES AND SPECIFICATIONS:

- Visible double-wall outside trap seal
- Easily removable filter screen
- Nonskid diamond treadplate cover(s)
- Double-wall construction and leak detection available
- Flush-with-floor installation for pedestrian traffic or reinforced for vehicle traffic
- OPEX® Shop Coat coating inside and bituminous coating outside

OST Series Oil Separator

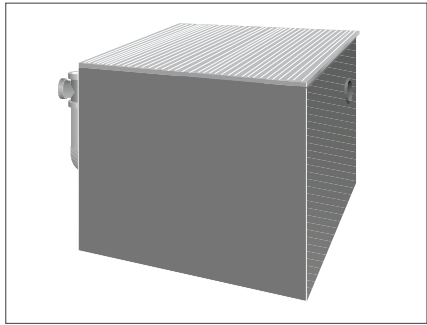


Designed with an integral storage compartment

FEATURES AND SPECIFICATIONS:

- Visible double-wall outside trap
- Easily removable filter screen
- Nonskid diamond treadplate cover(s)
- Double-wall construction and leak detection available
- Flush-with-floor installation for pedestrian traffic or reinforced for vehicle traffic
- OPEX® Shop Coat coating inside and bituminous coating outside

GOST Series Oil Separator

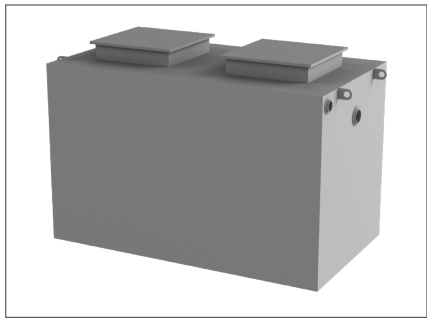


Designed for gravel and oil separation with an Integral Sediment Compartment

FEATURES AND SPECIFICATIONS:

- Visible double-wall outside trap
- Easily removable separator screen and filter screen
- Nonskid diamond treadplate cover(s)
- Flush-with-floor installation for pedestrian traffic or reinforced for vehicle traffic
- Double-wall construction and leak detection available
- OPEX® Shop Coat coating inside and bituminous coating outside

ROI Series Oil Interceptor



Designed to outperform concrete at every level

FEATURES AND SPECIFICATIONS:

- All welded heavy gauge steel construction
- Threaded inlet and outlet connections
- Removable nonskid flush-with-floor cover of heavy steel plate with leakproof and airtight gaskets
- Liquid Holding Capacities from 150 - 10,000 gallon
- Bituminous coating outside



Built to Last. All-Welded Construction.

Rockford Separators RSTD Series is constructed from 304 or 316 stainless steel, making them corrosion resistant and ideal for food and healthcare industries.

Applications:

RESTAURANTS
GROCERY STORES
INSTITUTIONAL KITCHENS
PRODUCTION FACILITIES
HOSPITALS

Trench drains, also known as trough or channel drains, are used to quickly evacuate wastewater. Rockford Separators RSTD Series trench drains are constructed

from 304 or 316 stainless steel, making them corrosion resistant.

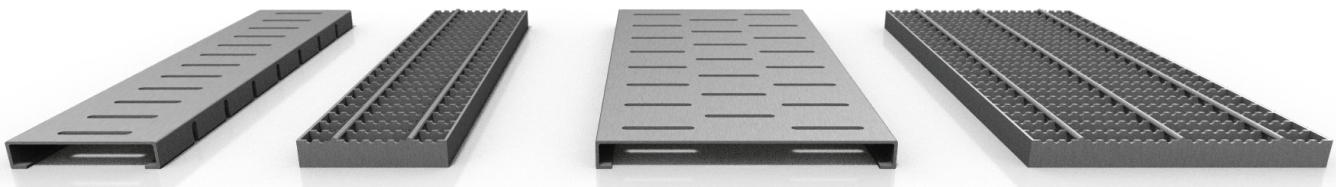
Stainless steel construction makes these trench drains less susceptible to the corrosion that can cause drains to hold bacteria. That's why you'll find Rockford Separator trench drains in restaurants, grocery stores, institutional kitchens, food production facilities, hospitals or anywhere hygiene and corrosion resistance is needed or mandated by the FDA.

Our trench drains are typically installed flush with the adjoining surface and are delivered ready to install with no assembly required.

You can choose from several grate options as well as heavy duty options that are H-20 rated.

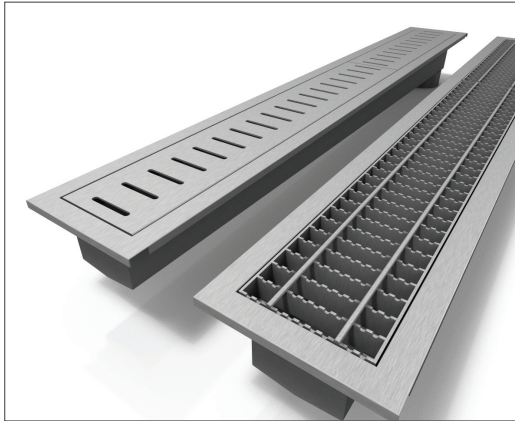
Constructed from 14 gauge 304 stainless steel with a 2B industrial finish, they feature a shallow end overall depth of 4.00" and a V bottom design with 1/4" per foot pitch standard (1/8" per foot by request). They are available in 2 foot to 20-foot single-piece complete drain with setting brackets located every 24" (standard). End or center drain is available.

*Note: For non-standard lengths please contact Rockford Separators.



Serrated Bar and formed slotted grate options come in 6" and 12" widths





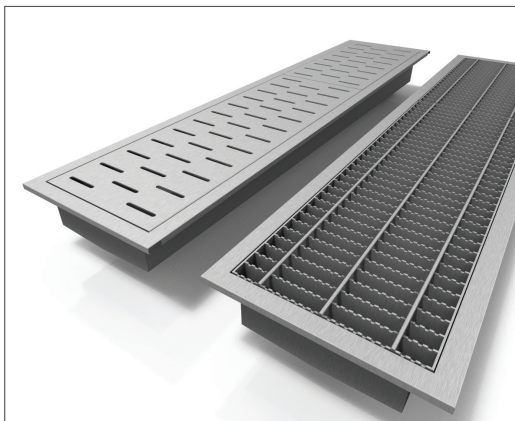
6" wide with 3/8" x 3" Slots or Serrated Grate

6" Wide Trench Drains

The trench drain is constructed from one all-welded design using 304 stainless steel (316 stainless steel is available upon request)

AVAILABLE IN 2' TO 20' LENGTHS WITH STANDARD 4" OUTLET CONNECTION

- Available in 2" and 3" outlet connection
- Designed to be flush with floor installation
- Able to withstand medium duty traffic
- H-20 load available
- Custom designs available



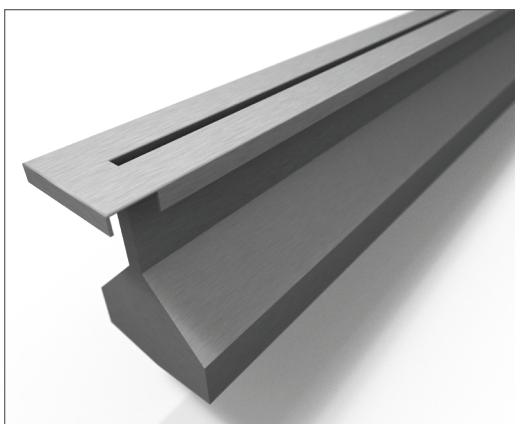
12" wide with 3/8" x 3" Slots or Serrated Grate

12" Wide Trench Drains

The trench drain is constructed from one all-welded design using 304 stainless steel (316 stainless steel is available upon request)

AVAILABLE IN 2' TO 20' LENGTHS WITH STANDARD 4" OUTLET CONNECTION

- Available in 2" and 3" outlet connection
- Designed to be flush with floor installation
- Able to withstand medium duty traffic
- H-20 load available
- Custom designs available



Slotted Trench Drains

Slotted Trench Drains

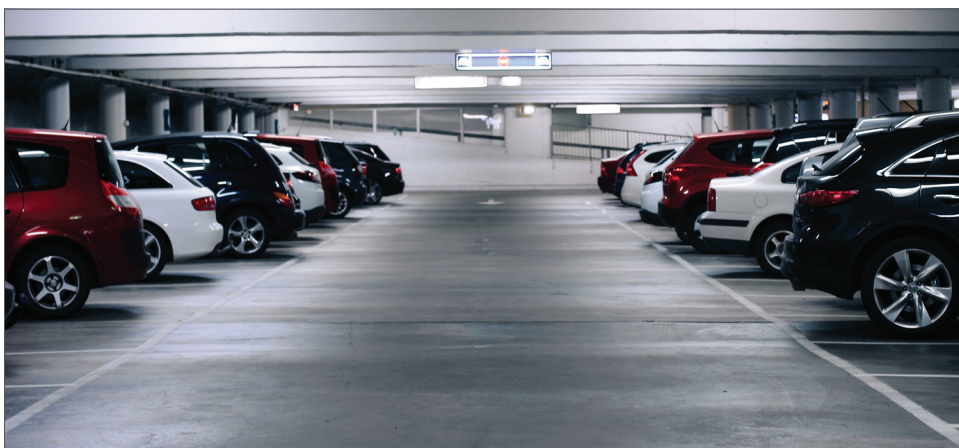
Slotted trench drains are made from 304 stainless steel and utilize a one-piece all-welded construction design (316 stainless steel is available upon request)

AVAILABLE IN 2' TO 20' SECTIONS WITH STANDARD 4" OUTLET CONNECTION

- Designed to be pedestrian friendly with a flush-with-floor installation
- Available in 2" and 3" outlet connection
- ADA Compliant
- H-20 Standard
- Custom designs available

Our heavier-than-water gravity system prevents sediment and waste from entering and damaging your drainage system. Water travels into the inlet and collects in the basin's holding reservoir. Heavier-than-water sediment and waste sink to the bottom where it is collected in the basin. Water free of sediment and debris flows safely into the drainage system.

PARKING LOTS

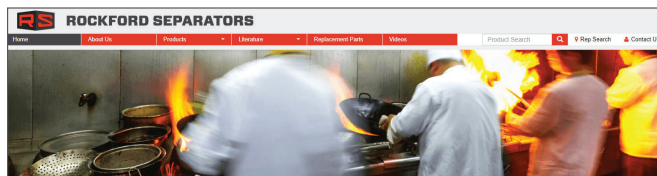


A 3D rendering of a rectangular metal enclosure, likely a control cabinet or power supply unit. It has a perforated top surface and a circular handle on the side. The enclosure is shown in a perspective view.

- All-welded steel construction
- Threaded inlet/outlet connections with internal outlet trap seal
- Furnished standard with loose set .38" x 3.00" slotted grate
- Flush with floor installation suitable for pedestrian traffic
- Optional top reinforced for heavy traffic
- OPEX® Shop Coat coating inside and bituminous coating outside
- Static Holding Capacities from 20 - 1,200 gallons

A 3D rendering of a rectangular metal enclosure, likely for a power supply unit. It features a slatted top for ventilation and a circular port on the front face.

- All-welded steel construction
- Internal rear vent connection
- Visible double-wall outside trap seal
- Grate suitable for pedestrian traffic or reinforced for heavy vehicular traffic
- Removable sediment and mud pan, separator screen, and filter screen
- OPEX® Shop Coat coating inside, bituminous coating outside



Rockford Separators


Architects, engineers, building officials, health agencies, plumbing contractors, and other specifiers have come to rely on Rockford for the utmost in quality, precision engineering and quick turnaround time.

Rockford Separators are used in separating and retaining numerous wastes: grease, oil, fuel, fat, lint, hair, soap residue, food solids, chemicals, sediment, solid waste, sand, gravel, sludge, plastics, precious metals, glass chips and grinding, fibrous materials, metal chips, and waste.

With separation as its sole business, Rockford Separators has supplied quality separation systems to the plumbing industry for over 40 years. More than 35 varieties in over 600 available sizes are engineered and custom-built in the USA for job-site specific applications and installed wherever separation systems are required.









THESE INCLUDE:


- Industrial Plants
- Office Buildings
- Multi-Unit Apartments
- Restaurants
- Food-Processing Plants
- Landscapers
- Health Centers
- Retail Service Centers




Maintenance Guides

Regular maintenance and cleaning of your Rockford Separator will ensure that they maintain not only their optimal operating efficiency, but extend the life of the product as well. With that in mind, we have created maintenance guides that will walk you through the process of properly maintaining and cleaning your Rockford Separator product. As always, if you ever have a question about your Rockford Separator, feel free to contact us at any time, and we'll be happy to assist you.













HOME / REPRESENTATIVES



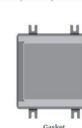


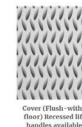



| State | Company | Address | Phone / Fax | Email address / URL |
|----------|----------------------------|--|---|---|
| Illinois | Rockford Separators | 3159 38th Ave Rockford, IL 61109 USA | 815-229-5077 800-747-9977 Fax: 815-229-5108 | rssems@rkfdseparators.com http://www.rkfdseparators.com/ |
| Illinois | PW Sullivan Co. | 628 Waterford View Ct Ballwin, MO 63020-9835 | 636-288-6800 800-875-8728 Fax: 636-586-0801 | sullivanpw@earthlink.net http://www.sullivanpw.com |
| Illinois | Infant Sales Group Inc. | 8913 North Prairie Irvine Prairie, IL 60155 | 312-693-7950 Fax: 312-693-7955 | infantsales@infantsalesgroup.com http://www.infantsalesgroup.com |
| Illinois | Denny-Plaster & Associates | 1000 Industrial Dr Unit 2A Bensenville, IL 60008 | 630-351-7575 Fax: 630-351-7775 | gsplaster@denny-plaster.com http://www.denny-plaster.com |



Replacement Parts

Replacement parts are available for all models of Rockford Separators. When ordering, please give the model number on the name plate on the cover of the standard separator or the underside of the cover of the flush-with-flush unit. Replacement parts are essential to maintain operating efficiency. You can find our replacement part form [HERE](#).

For more information, Visit www.rkfdseparators.com

Everything you need to purchase and maintain your Rockford Separators products

HELPFUL LITERATURE

- Catalogs
- Product Specifications
- Maintenance Guides

SEARCH FOR A REPRESENTATIVE IN YOUR STATE

Faster Turnaround

No one delivers like Rockford Separators. The bigger, the better. Select from our extensive inventories... Or get a custom engineered product – from 1 gallon to 50,000 gallon, including doublewall construction!



APPROVALS AND CERTIFICATIONS

- Accepted for Listing By: IAPMO (International Association of Plumbing and Mechanical Officials)
- Conforms To Plumbing & Drainage Institute Standard

With separation as its sole business, Rockford Separators has supplied quality separation systems to the plumbing industry for over 50 years. More than 35 varieties in over 600 available sizes are engineered and custom-built in the USA for job-site specific applications and installed wherever separation systems are required.

SERVICE CENTERS

Rockford Separators are used in separating and retaining numerous wastes: grease, oil, fuel, fats, lint, hair, food solids, sediment, solid waste, sand, gravel, sludge, plaster, precious metals, glass chips and grindings, fibrous materials, metal chips, and waxes.

Architects, engineers, building officials, health agencies, plumbing contractors, and other specifiers have come to rely on Rockford for the utmost in quality, precision engineering and quick turnaround time.

rssem@rkfdseparators.com