



# ROCKFORD SEPARATORS

5159 28th Ave ROCKFORD, IL 61109  
(815) 229-5077 - FAX (815) 229-5108  
www.rkfdseparators.com - rssem@rkfdseparators.com

**MODEL NO. SD-18**

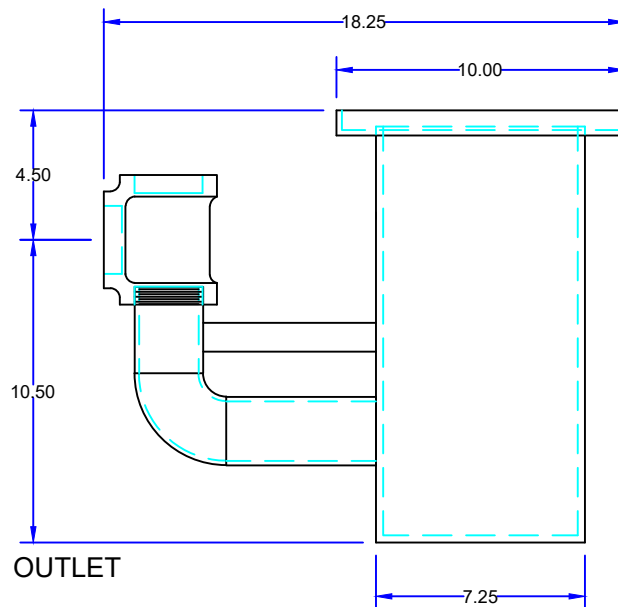
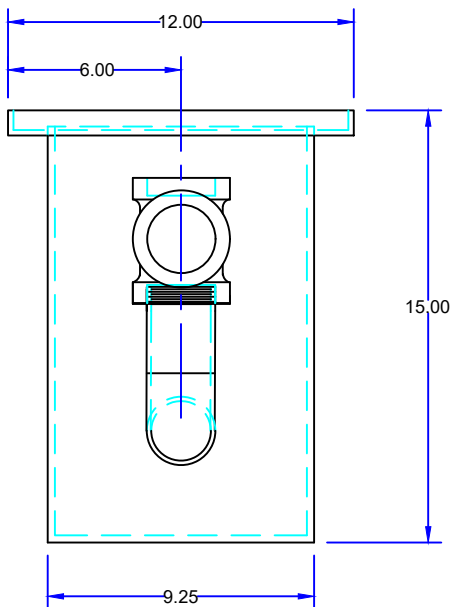
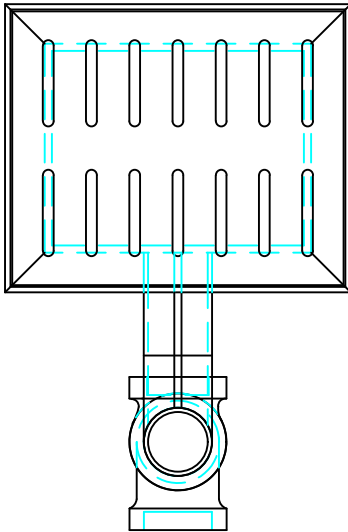
**SEDIMENT DRAIN**

**DRAWN BY R.P.P.**

**QUOTE#:**

**DATE: 08/02/22**

**JOB NAME:**



OPTIONAL FEATURES (ADDITIONAL COST)

- ☐ ANCHOR FLANGE
- ☐ EPOXY COATING
- ☐ LIGHT TRAFFIC REINFORCED COVERS
- ☐ HEAVY TRAFFIC H20 REINFORCED COVERS
- ☐ STAINLESS STEEL CONSTRUCTION
- ☐ INTEGRAL EXTENSION \_\_\_\_\_ INCHES
- ☐ INLET & OUTLET SIZE \_\_\_\_\_ INCHES
- ☐ AUXILIARY INLET TAPPING

## SPECIFICATIONS

Rockford Model SD-18 Separator Drain all welded A36 steel, 3.5 gallon liquid holding capacity, 12 LBS greasy sludge capacity 2.00" threaded outlet, visible double-wall outside trap seal, removable filter screen and separator screen, slotted (.38 x 3.00) inlet grate (for flush-with-floor installation) for pedestrian traffic, OPEX SHOP COAT coating inside & bituminous coating outside.

Optional features (Additional cost) listed above

**Approved By**

**Company**

**Date**