



ROCKFORD SEPARATORS

5159 28th Ave ROCKFORD, IL 61109

(815) 229-5077 - FAX (815) 229-5108

www.rkfdseparators.com - rssem@rkfdseparators.com

MODEL NO. SD-60

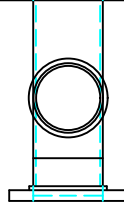
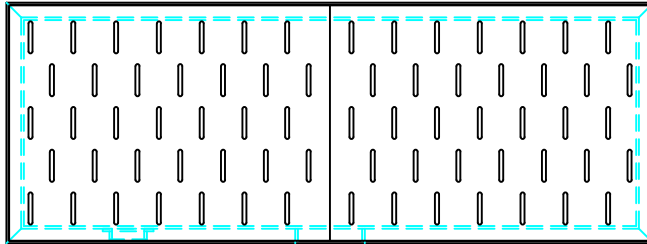
SEDIMENT DRAIN

DRAWN BY R.P.P.

QUOTE#:

DATE: 08/02/22

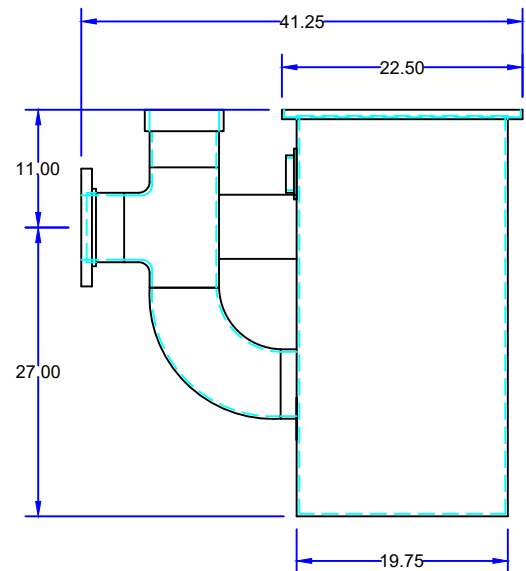
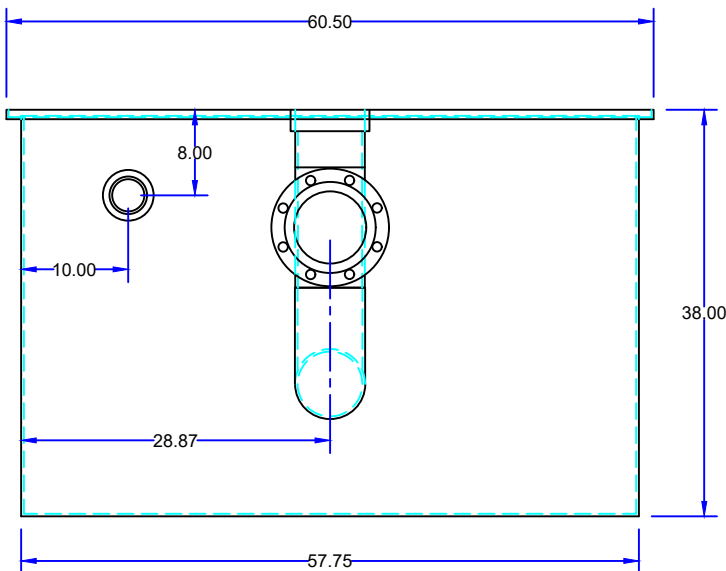
JOB NAME:



OUTLET

OPTIONAL FEATURES (ADDITIONAL COST)

- ☐ ANCHOR FLANGE
- ☐ EPOXY COATING
- ☐ LIGHT TRAFFIC REINFORCED COVERS
- ☐ HEAVY TRAFFIC H20 REINFORCED COVERS
- ☐ STAINLESS STEEL CONSTRUCTION
- ☐ INTEGRAL EXTENSION _____ INCHES
- ☐ INLET & OUTLET SIZE _____ INCHES
- ☐ AUXILIARY INLET TAPPING



SPECIFICATIONS

Rockford Model SD-60 Separator Drain all welded A36 1/4" steel, 125 gallon liquid holding capacity, 6.00" flanged outlet, 3.00" threaded vent connection, visible double-wall outside trap seal, removable filter screen and separator screen, slotted (.38 x 3.00) inlet grate (for flush-with-floor installation) for pedestrian traffic, OPEX SHOP COAT coating inside & bituminous coating outside.

Optional features (Additional cost) listed above

Approved By

Company

Date