



ROCKFORD SEPARATORS

5159 28th Ave ROCKFORD, IL 61109
(815) 229-5077 - FAX (815) 229-5108
www.rkfdseparators.com - rssem@rkfdseparators.com

MODEL NO. SD-96

SEDIMENT DRAIN

DRAWN BY R.P.P.

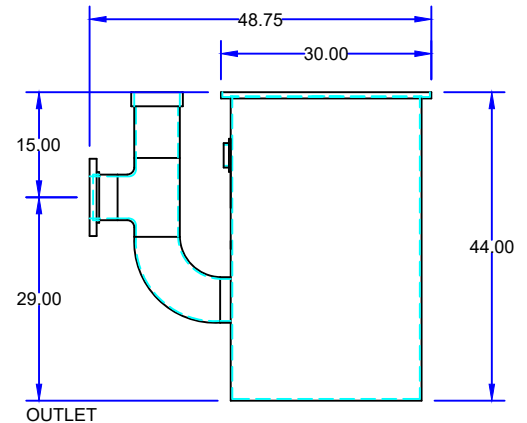
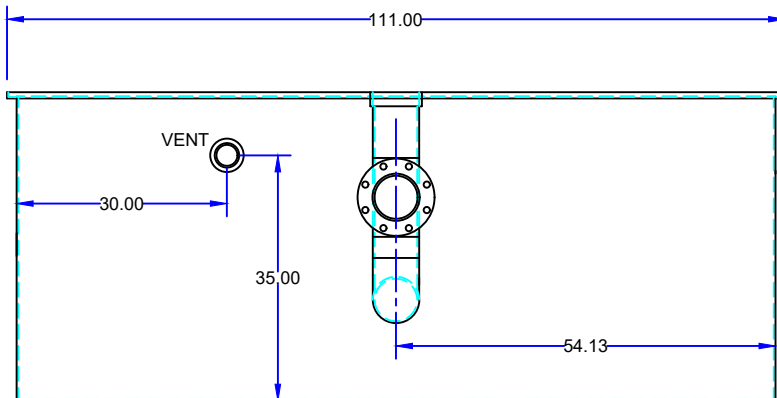
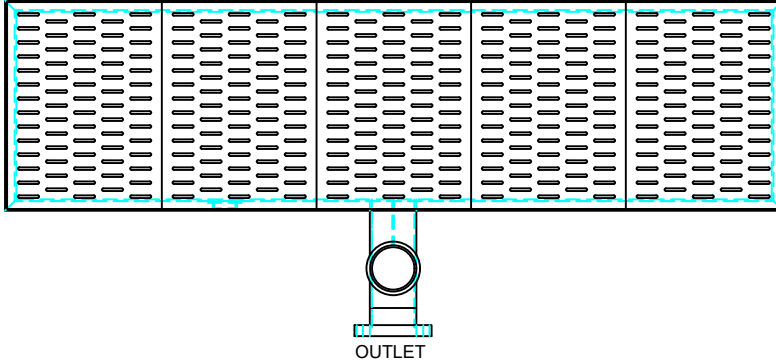
QUOTE#:

DATE: 08/02/22

JOB NAME:

OPTIONAL FEATURES (ADDITIONAL COST)

- ☐ ANCHOR FLANGE
- ☐ EPOXY COATING
- ☐ LIGHT TRAFFIC REINFORCED COVERS
- ☐ HEAVY TRAFFIC H20 REINFORCED COVERS
- ☐ STAINLESS STEEL CONSTRUCTION
- ☐ INTEGRAL EXTENSION _____ INCHES
- ☐ INLET & OUTLET SIZE _____ INCHES
- ☐ AUXILIARY INLET TAPPING



SPECIFICATIONS

Rockford Model SD-96 Oil/Sediment Separator drain all welded 1/4" steel, 330 gallon static capacity, 6.00" Companion flanged outlet, 3.00" threaded vent connection, visible double-wall outside trap seal, removable filter screen and separator screen, 3/8" slotted cover (for flush-with-floor installation) for pedestrian traffic, OPEX SHOP COAT coating inside & bituminous coating outside.

Optional features (Additional cost) listed above

Approved By

Company

Date