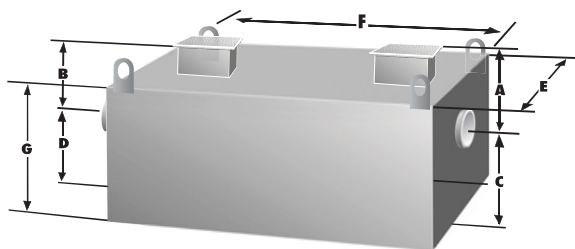


ROI SERIES SPECIFICATIONS

Model	Liquid Holding Capacity	Pipe Size	Top to Center		Bottom to Center		Width E	Length F	Height* G	Shipping Weight
			Outlet* A	Inlet* B	Outlet C	Inlet D				
ROI-150	150	4.00	18.00	16.00	24.00	26.00	34.00	48.00	36.00	750
ROI-250	250	4.00	18.00	16.00	38.00	40.00	34.00	48.00	50.00	1,100
ROI-350	350	4.00	18.00	16.00	42.00	44.00	42.00	48.00	54.00	1,200
ROI-500	500	4.00	18.00	16.00	42.00	44.00	48.00	60.00	54.00	1,450
ROI-750	750	4.00	18.00	16.00	48.00	50.00	48.00	84.00	60.00	1,900
ROI-1,000	1,000	4.00	18.00	16.00	48.00	50.00	54.00	96.00	60.00	2,200
ROI-1,250	1,250	4.00	16.00	14.00	50.00	52.00	60.00	102.00	60.00	2,500
ROI-1,500	1,500	4.00	16.00	14.00	50.00	52.00	60.00	120.00	60.00	2,800
ROI-2,000	2,000	6.00	16.00	14.00	50.00	52.00	72.00	144.00	60.00	3,100
ROI-2,500	2,500	6.00	16.00	14.00	50.00	52.00	84.00	144.00	60.00	5050
ROI-3,000	3,000	6.00	16.00	14.00	54.00	56.00	96.00	144.00	64.00	5650
ROI-3,500	3,500	6.00	16.00	14.00	62.00	64.00	96.00	144.00	72.00	6100
ROI-4,000	4,000	6.00	15.00	13.00	70.00	72.00	96.00	144.00	79.00	6,400
ROI-5,000	5,000	6.00	15.00	13.00	75.00	77.00	96.00	168.00	84.00	8,000
ROI-6,000	6,000	6.00	15.00	13.00	81.00	83.00	96.00	185.00	90.00	9,000
ROI-7,000	7,000	6.00	15.00	13.00	81.00	83.00	96.00	216.00	90.00	10,000
ROI-8,000	8,000	6.00	15.00	13.00	81.00	83.00	96.00	247.00	90.00	11,000
ROI-9,000	9,000	6.00	15.00	13.00	81.00	83.00	96.00	278.00	90.00	12,000
ROI-10,000	10,000	6.00	15.00	13.00	81.00	83.00	102.00	300.00	90.00	14,000

*Shown with standard 6" tall manway. Specify your requirement.

Interceptor Specifications: Rockford Model ROI-_____ all-welded steel gravity oil interceptor, with _____ gallon capacity, _____" threaded inlet/outlet connections, removable 3/8" nonskid diamond tread-plate cover for flush with grade installation suitable for heavy truck traffic, secured with stainless steel flat head screws heavy duty leak-proof gasket, and bituminous coating outside.



ROCKFORD SEPARATORS

5159 28th Avenue • Rockford, IL 61109 • 815.229.5077 • 800.747.5077 • Fax 815.229.5108

www.rkfdseparators.com



OIL INTERCEPTORS

**Outperforms Concrete
Just as economical**

(Full freight allowed!)

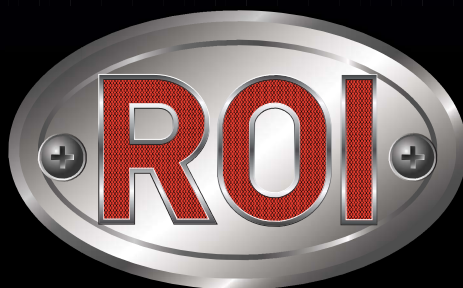


ROCKFORD SEPARATORS

Because concrete interceptors aren't all they're cracked up to be...

A concrete interceptor might seem like a 'solid' idea at the time. But before too long that concrete will begin to break down. Ever-widening cracks in the concrete, and its inherent porosity, bring the potential for leakage of waste material into the surrounding area, and seepage into the water table. With today's tough environmental standards, and federal, state and local regulations more stringent than ever, what seemed like such a 'concrete' idea at the time won't hold much water.

Why take a chance on concrete, when there's a better alternative made from steel? The new ROI Series from Rockford Separators. Solid!



The new ROI Oil Interceptors: designed to outperform concrete at every level.

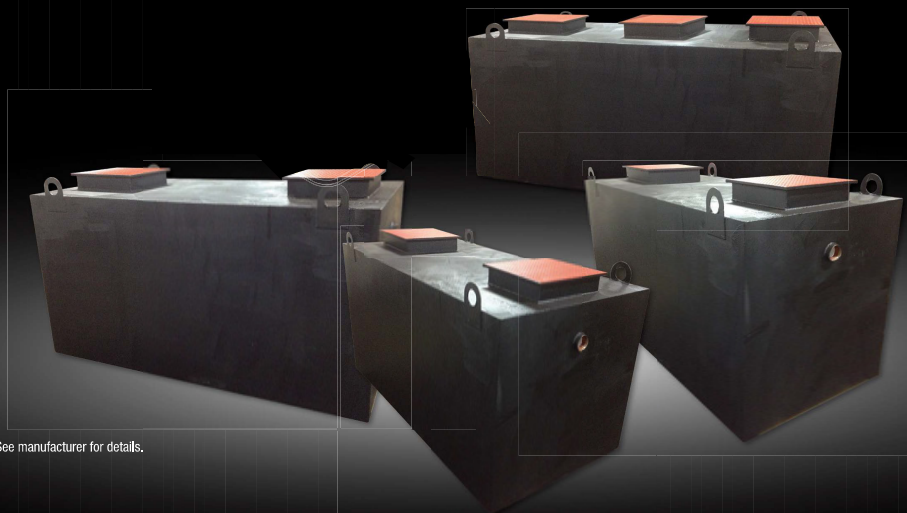
Leave it to Rockford Separators to develop a superior, and highly economical alternative to concrete oil interceptors. It's called the ROI Series. Because they're steel, the ROI series are inherently lighter, stronger, and more durable and reliable than concrete. Installation is easier, faster and more economical too, since the ROI goes in as a single, integral unit, vs. the more time-consuming assembly on-site of multiple concrete sections.

Priced right.

But what really makes the ROI so attractive as compared to both concrete and competitive steel units is the price. Rockford Separators has aggressively driven down ROI production costs, so the cost of getting a RGI unit to the job site now is not as big of an expense.

Strength – and flexibility.

Concrete might look good on paper – until you start trying to fit it to your particular application. Will the concrete unit have to be modified on-site to get the riser heights right? The ROI's riser heights are built to your specifications, and integrated into the structure itself. With 17 models and holding capacities ranging from 150 gallons to 10,000 gallons, meeting your requirements has never been faster, easier or more economical. The ROI even comes standard with an H-20 load rating.



* See manufacturer for details.



Easy, economical installation...built to your specs!

Pick it up, drop it in, start using it. With ROI's light, single-piece steel construction, it's that simple. With concrete – not so much. Heavy, multiple piece assembly is usually required, taking more time, equipment and manpower. In addition, the ROI can be built to your specs, with riser heights tailored to your particular installation requirements, and already integrated into the unit when it arrives on-site. With concrete, extra steps, and more costly installation time, are needed to get it right.

